

For Research Use Only

# Kir4.1 Monoclonal antibody

Catalog Number: 66931-1-Ig **2 Publications**



## Basic Information

<b>Catalog Number:</b> 66931-1-Ig	<b>GenBank Accession Number:</b> BC034036	<b>Purification Method:</b> Protein G purification
<b>Size:</b> 150ul , Concentration: 1900 ug/ml by Nanodrop and 1000 ug/ml by Bradford method using BSA as the standard;	<b>GeneID (NCBI):</b> 3766	<b>CloneNo.:</b> 2D6A6
<b>Source:</b> Mouse	<b>UNIPROT ID:</b> P78508	<b>Recommended Dilutions:</b> WB 1:5000-1:50000
<b>Isotype:</b> IgG1	<b>Full Name:</b> potassium inwardly-rectifying channel, subfamily J, member 10	
<b>Immunogen Catalog Number:</b> AG16785	<b>Calculated MW:</b> 379 aa, 41 kDa	
	<b>Observed MW:</b> 40 kDa	

## Applications

<b>Tested Applications:</b> WB, ELISA	<b>Positive Controls:</b>
<b>Cited Applications:</b> WB, IHC	<b>WB :</b> mouse cerebellum tissue, mouse brain tissue, SH-SY5Y cells
<b>Species Specificity:</b> Human, Mouse	
<b>Cited Species:</b> mouse	

## Notable Publications

Author	Pubmed ID	Journal	Application
Encheng Zhou	36578058	J Ovarian Res	IHC
Xiang Li	36990129	Biochim Biophys Acta Mol Basis Dis	WB

## Storage

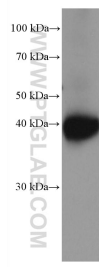
**Storage:**  
Store at -20°C. Stable for one year after shipment.  
**Storage Buffer:**  
PBS with 0.02% sodium azide and 50% glycerol pH 7.3.  
Aliquoting is unnecessary for -20°C storage

\*\*\* 20ul sizes contain 0.1% BSA

For technical support and original validation data for this product please contact:  
T: 1 (888) 4PTGLAB (1-888-478-4522) (toll free in USA), or 1(312) 455-8498 (outside USA)  
E: [proteintech@ptglab.com](mailto:proteintech@ptglab.com)  
W: [ptglab.com](http://ptglab.com)

This product is exclusively available under Proteintech Group brand and is not available to purchase from any other manufacturer.

## Selected Validation Data



mouse cerebellum tissue were subjected to SDS PAGE followed by western blot with 66931-1-Ig (Kir4.1 antibody) at dilution of 1:10000 incubated at room temperature for 1.5 hours.