

For Research Use Only

Kir4.1 Monoclonal antibody

Catalog Number: 66931-1-Ig **2 Publications**



Basic Information

Catalog Number: 66931-1-Ig	GenBank Accession Number: BC034036	Purification Method: Protein G purification
Size: 150ul , Concentration: 1900 µg/ml by Nanodrop and 1000 µg/ml by Bradford method using BSA as the standard;	GeneID (NCBI): 3766	CloneNo.: 2D6A6
Source: Mouse	Full Name: potassium inwardly-rectifying channel, subfamily J, member 10	Recommended Dilutions: WB 1:5000-1:50000
Isotype: IgG1	Calculated MW: 379 aa, 41 kDa	
Immunogen Catalog Number: AG16785	Observed MW: 40 kDa	

Applications

Tested Applications: WB, ELISA	Positive Controls: WB : mouse cerebellum tissue, mouse brain tissue, SH-SY5Y cells
Cited Applications: IHC, WB	
Species Specificity: Human, Mouse	
Cited Species: mouse	

Background Information

Notable Publications

Author	Pubmed ID	Journal	Application
Encheng Zhou	36578058	J Ovarian Res	IHC
Xiang Li	36990129	Biochim Biophys Acta Mol Basis Dis	WB

Storage

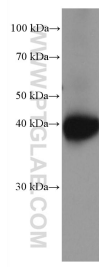
Storage:
Store at -20°C. Stable for one year after shipment.
Storage Buffer:
PBS with 0.02% sodium azide and 50% glycerol pH 7.3.
Aliquoting is unnecessary for -20°C storage

*** 20ul sizes contain 0.1% BSA

For technical support and original validation data for this product please contact:
T: 1 (888) 4PTGLAB (1-888-478-4522) (toll free in USA), or 1(312) 455-8498 (outside USA)
E: proteintech@ptglab.com
W: ptglab.com

This product is exclusively available under Proteintech Group brand and is not available to purchase from any other manufacturer.

Selected Validation Data



mouse cerebellum tissue were subjected to SDS PAGE followed by western blot with 66931-1-Ig (Kir4.1 antibody) at dilution of 1:10000 incubated at room temperature for 1.5 hours.