

For Research Use Only

ARH Monoclonal antibody

Catalog Number: 66932-2-Ig **1 Publications**



Basic Information

Catalog Number: 66932-2-Ig	GenBank Accession Number: BC029770	Purification Method: Protein A purification
Size: 150ul , Concentration: 1000 ug/ml by Bradford method using BSA as the standard;	GeneID (NCBI): 26119	CloneNo.: 1D1B11
Source: Mouse	UNIPROT ID: Q5SW96	Recommended Dilutions: WB 1:5000-1:50000
Isotype: IgG2b	Full Name: low density lipoprotein receptor adaptor protein 1	
Immunogen Catalog Number: AG28608	Calculated MW: 308 aa, 34 kDa	
	Observed MW: 34 kDa	

Applications

Tested Applications: WB, FC (Intra), ELISA	Positive Controls: WB : A549 cells, HeLa cells, HEK-293 cells, HepG2 cells, K-562 cells, THP-1 cells, HSC-T6 cells
Cited Applications: WB	
Species Specificity: human, rat	
Cited Species: human	

Notable Publications

Author	Pubmed ID	Journal	Application
Miao Xian	38982045	Nat Commun	WB

Storage

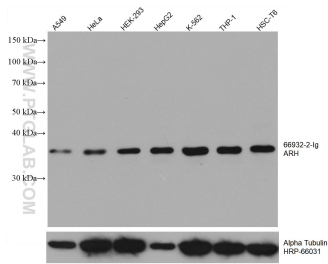
Storage:
Store at -20°C. Stable for one year after shipment.
Storage Buffer:
PBS with 0.02% sodium azide and 50% glycerol pH 7.3.
Aliquoting is unnecessary for -20°C storage

*** 20ul sizes contain 0.1% BSA

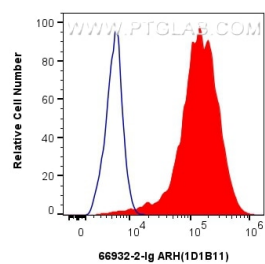
For technical support and original validation data for this product please contact:
T: 1 (888) 4PTGLAB (1-888-478-4522) (toll free in USA), or 1(312) 455-8498 (outside USA)
E: proteintech@ptglab.com
W: ptglab.com

This product is exclusively available under Proteintech Group brand and is not available to purchase from any other manufacturer.

Selected Validation Data



Various lysates were subjected to SDS PAGE followed by western blot with 66932-2-Ig (ARH antibody) at dilution of 1:10000 incubated at room temperature for 1.5 hours. The membrane was stripped and reblotted with HRP-conjugated Alpha Tubulin Monoclonal antibody (HRP-66031) as loading control.



1x10⁶ HeLa cells were intracellularly stained with 0.8 ug ARH Monoclonal antibody (66932-2-Ig, Clone: 1D1B11) and CoraLite® 488-Conjugated Goat Anti-Mouse IgG(H+L) (SA00013-1)(red), or 0.8 ug Mouse IgG2b isotype control Mouse McAb (66360-3-Ig, Clone: 11B8C4) (blue). Cells were fixed with 4% PFA and permeabilized with Flow Cytometry Perm Buffer (PF00011-C).