

For Research Use Only

ZFP36 Monoclonal antibody, PBS Only



Catalog Number: 66938-1-PBS

Featured Product

Basic Information

Catalog Number:

66938-1-PBS

Size:

100ug, Concentration: 1 mg/ml by Nanodrop;

Source:

Mouse

Isotype:

IgG2a

Immunogen Catalog Number:

AG28473

GenBank Accession Number:

BC009693

GeneID (NCBI):

7538

UNIPROT ID:

P26651

Full Name:

zinc finger protein 36, C3H type, homolog (mouse)

Calculated MW:

326 aa, 34 kDa

Observed MW:

34 kDa

Purification Method:

Protein A purification

CloneNo.:

1A5E6

Applications

Tested Applications:

WB, Indirect ELISA

Species Specificity:

Human, mouse, pig

Background Information

The expression of many cytokines is regulated post-transcriptionally by factors that modulate mRNA transport, translation, and stability. Much of this regulation occurs by the binding and stabilizing, or destabilizing, of cytokine mRNAs by proteins that recognize adenosine and uridine-rich elements (AREs) in untranslated regions of target transcripts. Zfp36 is a mRNA-binding protein involved in post-transcriptional regulation of AU-rich element (ARE)-containing mRNAs. It was demonstrated to physically interact with the p65 subunit of nuclear factor- κ B leading to decreased nuclear import and diminished transcriptional activation mediated by nuclear factor- κ B. It acted by specifically binding ARE-containing mRNAs and promoting their degradation, and has a crucial role in the post-transcriptional regulation of tumor necrosis factor (TNF).

Storage

Storage:

Store at -80°C.

Storage Buffer:

PBS Only

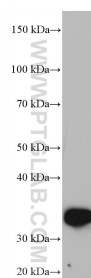
For technical support and original validation data for this product please contact:

T: 1 (888) 4PTGLAB (1-888-478-4522) (toll free in USA), or 1(312) 455-8498 (outside USA)

E: proteintech@ptglab.com
W: ptglab.com

This product is exclusively available under Proteintech Group brand and is not available to purchase from any other manufacturer.

Selected Validation Data



HepG2 cells were subjected to SDS PAGE followed by western blot with 66938-1-Ig (ZFP36 antibody) at dilution of 1:3000 incubated at room temperature for 1.5 hours. This data was developed using the same antibody clone with 66938-1-PBS in a different storage buffer formulation.