

For Research Use Only

ADH1B Monoclonal antibody

Catalog Number: 66939-1-Ig

Featured Product

7 Publications



Basic Information

Catalog Number:

66939-1-Ig

Size:

150ul, Concentration: 2200 ug/ml by 125 Nanodrop and 1000 ug/ml by Bradford method using BSA as the standard;

Source:

Mouse

Isotype:

IgG2a

Immunogen Catalog Number:

AG10630

GenBank Accession Number:

BC033009

GeneID (NCBI):

125

UNIPROT ID:

P00325

Full Name:

alcohol dehydrogenase 1B (class I), beta polypeptide

Calculated MW:

375 aa, 40 kDa

Observed MW:

35-40 kDa

Purification Method:

Protein A purification

CloneNo.:

1F1B4

Recommended Dilutions:

WB 1:2000-1:10000

IHC 1:1000-1:4000

IF/ICC 1:200-1:800

Applications

Tested Applications:

WB, IHC, IF/ICC, ELISA

Cited Applications:

WB, IHC, IF

Species Specificity:

Human, Mouse, Rat, Pig

Cited Species:

human, mouse

Note-IHC: suggested antigen retrieval with TE buffer pH 9.0; (*) Alternatively, antigen retrieval may be performed with citrate buffer pH 6.0

Positive Controls:

WB: L02 cells, HepG2 cells, pig liver tissue, rat liver tissue, SMMC-7721 cells, HuH-7 cells

IHC: human liver cancer tissue,

IF/ICC: HepG2 cells,

Background Information

The ADH1B gene encodes the beta subunit of class I alcohol dehydrogenase (ADH), an enzyme that catalyzes the rate-limiting step for ethanol metabolism: the oxidation of alcohol to acetaldehyde. Class 1 ADH is a homo- or heterodimeric molecule, formed by the association of 3 types of class I ADH subunits, alpha (ADH1A), beta, and gamma (ADH1C). ADH1B is also named as ADH2 and belongs to the zinc-containing alcohol dehydrogenase family. This protein can exist as a homodimer (PMID:19365573).

Notable Publications

Author	Pubmed ID	Journal	Application
Chengmao Xie	35938015	Front Genet	WB
Chi-Yao Hsueh	35198889	iScience	WB, IHC
Limin Gao	35115920	Front Pharmacol	WB

Storage

Storage:

Store at -20°C. Stable for one year after shipment.

Storage Buffer:

PBS with 0.02% sodium azide and 50% glycerol pH 7.3.

Aliquoting is unnecessary for -20°C storage

*** 20ul sizes contain 0.1% BSA

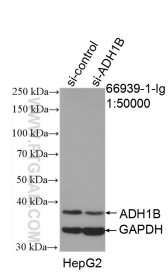
For technical support and original validation data for this product please contact:

T: 1 (888) 4PTGLAB (1-888-478-4522) (toll free in USA), or 1(312) 455-8498 (outside USA)

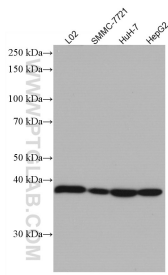
E: proteintech@ptglab.com
W: ptglab.com

This product is exclusively available under Proteintech Group brand and is not available to purchase from any other manufacturer.

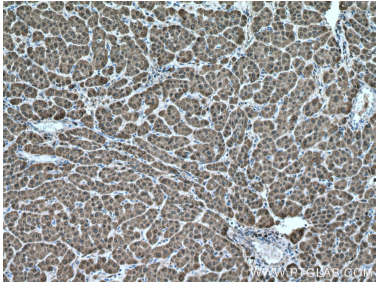
Selected Validation Data



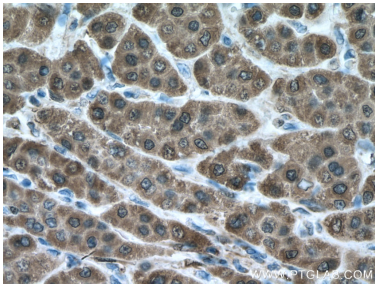
WB result of ADH1B antibody (66939-1-Ig; 1:50000; incubated at room temperature for 1.5 hours) with sh-Control and sh-ADH1B transfected HepG2 cells.



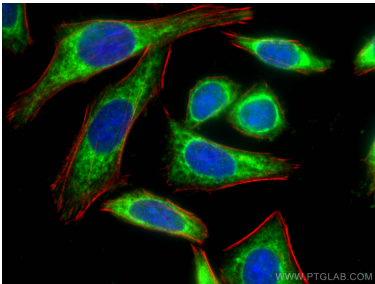
Various lysates were subjected to SDS PAGE followed by western blot with 66939-1-Ig (ADH1B antibody) at dilution of 1:5000 incubated at room temperature for 1.5 hours.



Immunohistochemical analysis of paraffin-embedded human liver cancer tissue slide using 66939-1-Ig (ADH1B antibody) at dilution of 1:2000 (under 10x lens. Heat mediated antigen retrieval with Tris-EDTA buffer (pH 9.0).



Immunohistochemical analysis of paraffin-embedded human liver cancer tissue slide using 66939-1-Ig (ADH1B antibody) at dilution of 1:2000 (under 40x lens. Heat mediated antigen retrieval with Tris-EDTA buffer (pH 9.0).



Immunofluorescent analysis of (-20°C Ethanol) fixed HepG2 cells using ADH1B antibody (66939-1-Ig, Clone: 1F1B4) at dilution of 1:400 and CoraLite® 488-Conjugated Goat Anti-Mouse IgG(H+L), CL594-Phalloidin (red).