

For Research Use Only

# MRRF Monoclonal antibody

Catalog Number: 66942-1-Ig



## Basic Information

Catalog Number:

66942-1-Ig

Size:

150ul , Concentration: 1800 ug/ml by Nanodrop and 1000 ug/ml by Bradford method using BSA as the standard;

Source:

Mouse

Isotype:

IgG1

Immunogen Catalog Number:

AG28583

GenBank Accession Number:

BC013049

GeneID (NCBI):

92399

UNIPROT ID:

Q96E11

Full Name:

mitochondrial ribosome recycling factor

Calculated MW:

262 aa, 29 kDa

Observed MW:

25 kDa

Purification Method:

Protein G purification

CloneNo.:

1G5C3

Recommended Dilutions:

WB 1:1000-1:6000

IF/ICC 1:500-1:2000

## Applications

Tested Applications:

WB, IF/ICC, ELISA

Species Specificity:

human

Positive Controls:

WB : HeLa cells, HEK-293 cells, A431 cells, HepG2 cells, MCF-7 cells

IF/ICC : HeLa cells,

## Storage

Storage:

Store at -20°C. Stable for one year after shipment.

Storage Buffer:

PBS with 0.02% sodium azide and 50% glycerol pH 7.3.

Aliquoting is unnecessary for -20°C storage

\*\*\* 20ul sizes contain 0.1% BSA

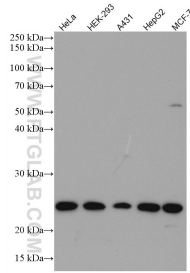
For technical support and original validation data for this product please contact:

T: 1 (888) 4PTGLAB (1-888-478-4522) (toll free in USA), or 1(312) 455-8498 (outside USA)

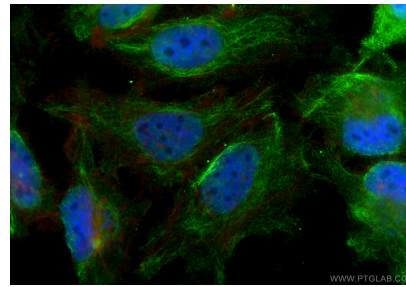
E: [proteintech@ptglab.com](mailto:proteintech@ptglab.com)  
W: [ptglab.com](http://ptglab.com)

This product is exclusively available under Proteintech Group brand and is not available to purchase from any other manufacturer.

## Selected Validation Data



Various lysates were subjected to SDS PAGE followed by western blot with 66942-1-Ig (MRRF antibody) at dilution of 1:3000 incubated at room temperature for 1.5 hours.



Immunofluorescent analysis of (4% PFA) fixed HeLa cells using MRRF antibody (66942-1-Ig, Clone: 1G5C3) at dilution of 1:1000 and CoraLite®488-Conjugated Goat Anti-Mouse IgG(H+L) (SA00013-1), CL594-Phalloidin (red).