

For Research Use Only

# MRRF Monoclonal antibody, PBS Only

Catalog Number: 66942-1-PBS



## Basic Information

Catalog Number:

66942-1-PBS

Size:

100ug , Concentration: 1mg/ml by Nanodrop;

Source:

Mouse

Isotype:

IgG1

Immunogen Catalog Number:

AG28583

GenBank Accession Number:

BC013049

GeneID (NCBI):

92399

UNIPROT ID:

Q96E11

Full Name:

mitochondrial ribosome recycling factor

Calculated MW:

262 aa, 29 kDa

Observed MW:

25 kDa

Purification Method:

Protein G purification

CloneNo.:

1G5C3

## Applications

Tested Applications:

WB, IF/ICC, Indirect ELISA

Species Specificity:

human

## Storage

Storage:

Store at -80°C.

Storage Buffer:

PBS Only

For technical support and original validation data for this product please contact:

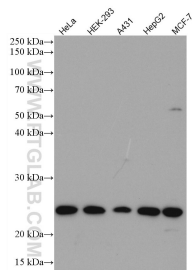
T: 1 (888) 4PTGLAB (1-888-478-4522) (toll free in USA), or 1(312) 455-8498 (outside USA)

E: [proteintech@ptglab.com](mailto:proteintech@ptglab.com)

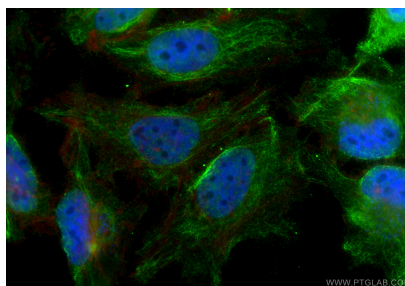
W: [ptglab.com](http://ptglab.com)

This product is exclusively available under Proteintech Group brand and is not available to purchase from any other manufacturer.

## Selected Validation Data



Various lysates were subjected to SDS PAGE followed by western blot with 66942-1-Ig (MRRF antibody) at dilution of 1:3000 incubated at room temperature for 1.5 hours. This data was developed using the same antibody clone with 66942-1-PBS in a different storage buffer formulation.



Immunofluorescent analysis of (4% PFA) fixed HeLa cells using MRRF antibody (66942-1-Ig, Clone: 1G5C3 ) at dilution of 1:1000 and CoraLite®488-Conjugated Goat Anti-Mouse IgG(H+L) (SA00013-1), CL594-Phalloidin (red). This data was developed using the same antibody clone with 66942-1-PBS in a different storage buffer formulation.