

For Research Use Only

# Protein A Monoclonal antibody

Catalog Number: 66945-1-Ig **4 Publications**



## Basic Information

Catalog Number:

66945-1-Ig

GenBank Accession Number:

EU695225

Purification Method:

Protein G purification

Size:

150ul, Concentration: 1500 ug/ml by Nanodrop and 1000 ug/ml by Bradford method using BSA as the standard;

GeneID (NCBI):

Full Name:

CloneNo.:

1G6A6

Recommended Dilutions:

WB 1:2000-1:10000

Source:

Mouse

Isotype:

IgG2a

## Applications

Tested Applications:

WB, ELISA

Positive Controls:

WB: recombinant protein, recombinant protein

Cited Applications:

WB, IP

Species Specificity:

staphylococcus aureus

Cited Species:

human, mouse, yeast

## Background Information

Protein A is a surface protein of S.aureus which binds IgG molecules by their Fc region (PMID: 4163007). Engineered Protein A has been widely used in antibody purification due to its Fc binding property. However, trace of protein A might be leaked from purification resin thus causes contamination of final products. Antibody against Protein A or ELISA kits for Protein A could be used to evaluate leaking level of Protein A from resin. Protein A should be deactivated (e.g. boiling in 5-10% tween-20) before testing.

## Notable Publications

Author	Pubmed ID	Journal	Application
Katsutoshi Yoshizato	35792074	J Biochem	
Qian Wang	17467839	Virus Res	IP
Congcong Tian	38713623	Proc Natl Acad Sci U S A	WB

## Storage

Storage:

Store at -20°C. Stable for one year after shipment.

Storage Buffer:

PBS with 0.02% sodium azide and 50% glycerol, pH7.3

Aliquoting is unnecessary for -20°C storage

\*\*\* 20ul sizes contain 0.1% BSA

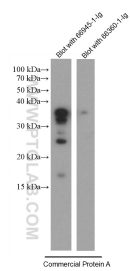
For technical support and original validation data for this product please contact:

T: 1 (888) 4PTGLAB (1-888-478-4522) (toll free in USA), or 1(312) 455-8498 (outside USA)

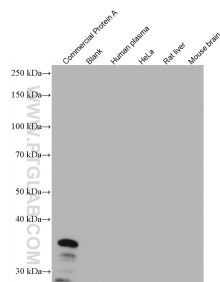
E: proteintech@ptglab.com  
W: ptglab.com

This product is exclusively available under Proteintech Group brand and is not available to purchase from any other manufacturer.

## Selected Validation Data



Commercial Protein A was deactivated and lysed followed by SDS-PAGE and then blot with 66945-1-Ig (Protein A antibody) at dilution of 1:10000 and isotype control antibody 66360-1-Ig at 1:2000 incubated at room temperature for 1.5 hours.



Commercial Protein A and negative samples (human plasma, HeLa cells, rat liver, mouse brain) were subjected to SDS-PAGE followed by western blot with 66945-1-Ig (Protein A antibody) at dilution of 1:10000 incubated at room temperature for 1.5 hours.