

For Research Use Only

# 14-3-3E Monoclonal antibody

Catalog Number: 66946-1-Ig **2 Publications**



## Basic Information

<b>Catalog Number:</b> 66946-1-Ig	<b>GenBank Accession Number:</b> BC000179	<b>Purification Method:</b> Protein A purification
<b>Size:</b> 150ul , Concentration: 2200 ug/ml by Nanodrop and 1000 ug/ml by Bradford method using BSA as the standard;	<b>GeneID (NCBI):</b> 7531	<b>CloneNo.:</b> 3A3A4
<b>Source:</b> Mouse	<b>UNIPROT ID:</b> P62258	<b>Recommended Dilutions:</b> WB 1:5000-1:50000 IHC 1:500-1:2000
<b>Isotype:</b> IgG2b	<b>Full Name:</b> tyrosine 3-monooxygenase/tryptophan 5-monooxygenase activation protein, epsilon polypeptide	
<b>Immunogen Catalog Number:</b> AG25186	<b>Calculated MW:</b> 255 aa, 29 kDa	
	<b>Observed MW:</b> 28-32 kDa	

## Applications

<b>Tested Applications:</b> WB, IHC, ELISA	<b>Positive Controls:</b>
<b>Cited Applications:</b> WB	<b>WB :</b> HeLa cells, HEK-293 cells, MCF-7 cells, Jurkat cells, HSC-T6 cells, NIH/3T3 cells, RAW 264.7 cells
<b>Species Specificity:</b> Human, mouse, rat	<b>IHC :</b> rat liver tissue,
<b>Cited Species:</b> human, mouse	
<b>Note-IHC: suggested antigen retrieval with TE buffer pH 9.0; (*) Alternatively, antigen retrieval may be performed with citrate buffer pH 6.0</b>	

## Background Information

14-3-3 epsilon (also known as YWHAE) is a member of 14-3-3 proteins which were the first phosphoserine/phosphothreonine-binding proteins to be discovered. 14-3-3 family members interact with a wide spectrum of proteins and possess diverse functions. Mammals express seven distinct 14-3-3 isoforms (gamma, epsilon, beta, zeta, sigma, theta, tau) that form multiple homo- and hetero- dimmers. 14-3-3 proteins display the highest expression levels in the brain, and have been implicated in several neurodegenerative diseases, including Alzheimer's disease and amyotrophic lateral sclerosis.

## Notable Publications

Author	Pubmed ID	Journal	Application
Jiafu Zhao	32801901	Cancer Manag Res	WB
Jiafu Zhao	35928803	Oncol Lett	

## Storage

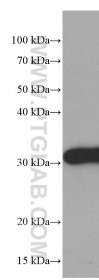
**Storage:**  
Store at -20°C. Stable for one year after shipment.  
**Storage Buffer:**  
PBS with 0.02% sodium azide and 50% glycerol pH 7.3.  
Aliquoting is unnecessary for -20°C storage

\*\*\* 20ul sizes contain 0.1% BSA

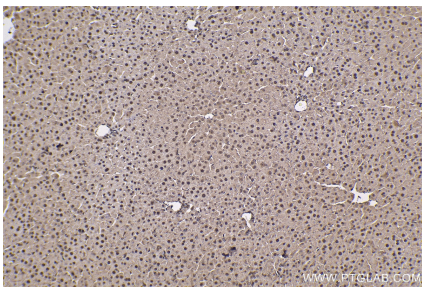
For technical support and original validation data for this product please contact:  
T: 1 (888) 4PTGLAB (1-888-478-4522) (toll free in USA), or 1(312) 455-8498 (outside USA)  
E: proteintech@ptglab.com  
W: ptglab.com

This product is exclusively available under Proteintech Group brand and is not available to purchase from any other manufacturer.

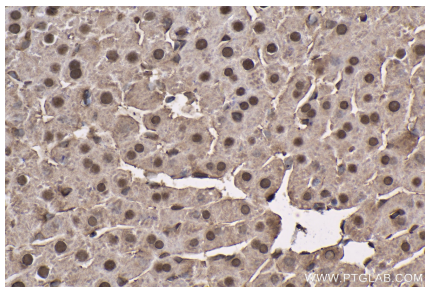
## Selected Validation Data



HeLa cells were subjected to SDS PAGE followed by western blot with 66946-1-Ig (14-3-3E antibody) at dilution of 1:20000 incubated at room temperature for 1.5 hours.



Immunohistochemical analysis of paraffin-embedded rat liver tissue slide using 66946-1-Ig (14-3-3E antibody) at dilution of 1:1 (under 10x lens). Heat mediated antigen retrieval with Tris-EDTA buffer (pH 9.0).



Immunohistochemical analysis of paraffin-embedded rat liver tissue slide using 66946-1-Ig (14-3-3E antibody) at dilution of 1:1 (under 40x lens). Heat mediated antigen retrieval with Tris-EDTA buffer (pH 9.0).