

For Research Use Only

# RELB Monoclonal antibody

Catalog Number: 66947-1-Ig **1 Publications**



## Basic Information

<b>Catalog Number:</b> 66947-1-Ig	<b>GenBank Accession Number:</b> BC028013	<b>Purification Method:</b> Protein G purification
<b>Size:</b> 150ul , Concentration: 1500 ug/ml by Nanodrop and 1000 ug/ml by Bradford method using BSA as the standard;	<b>GeneID (NCBI):</b> 5971	<b>CloneNo.:</b> 1D7E10
<b>Source:</b> Mouse	<b>UNIPROT ID:</b> Q01201	<b>Recommended Dilutions:</b> WB 1:1000-1:4000
<b>Isotype:</b> IgG1	<b>Full Name:</b> v-rel reticuloendotheliosis viral oncogene homolog B	
<b>Immunogen Catalog Number:</b> AG13824	<b>Calculated MW:</b> 62 kDa	
	<b>Observed MW:</b> 62-65 kDa	

## Applications

<b>Tested Applications:</b> WB, ELISA	<b>Positive Controls:</b> WB : Raji cells,
<b>Cited Applications:</b> WB	
<b>Species Specificity:</b> Human	
<b>Cited Species:</b> human	

## Background Information

RELB, also named as Transcription factor RelB, is a 579 amino acid protein, which contains one RHD domain. RELB localizes in the nucleus and cytoplasm. RELB is a pleiotropic transcription factor which is present in almost all cell types and is involved in many biological processes such as inflammation, immunity, differentiation, cell growth, tumorigenesis and apoptosis.

## Notable Publications

Author	Pubmed ID	Journal	Application
Junyang Tan	37277441	Commun Biol	WB

## Storage

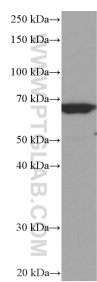
**Storage:**  
Store at -20°C. Stable for one year after shipment.  
**Storage Buffer:**  
PBS with 0.02% sodium azide and 50% glycerol pH 7.3.  
Aliquoting is unnecessary for -20°C storage

\*\*\* 20ul sizes contain 0.1% BSA

For technical support and original validation data for this product please contact:  
T: 1 (888) 4PTGLAB (1-888-478-4522) (toll free in USA), or 1(312) 455-8498 (outside USA)  
E: [proteintech@ptglab.com](mailto:proteintech@ptglab.com)  
W: [ptglab.com](http://ptglab.com)

This product is exclusively available under Proteintech Group brand and is not available to purchase from any other manufacturer.

## Selected Validation Data



Raji cells were subjected to SDS PAGE followed by western blot with 66947-1-Ig (RELB antibody) at dilution of 1:2000 incubated at room temperature for 1.5 hours.