

For Research Use Only

NOTUM Monoclonal antibody, PBS Only (Detector)

Catalog Number: 66956-1-PBS



Basic Information

Catalog Number: 66956-1-PBS	GenBank Accession Number: BC060882	Purification Method: Protein A purification
Size: 100ug , Concentration: 1mg/ml by Nanodrop;	GeneID (NCBI): 147111	CloneNo.: 2F6D5
Source: Mouse	UNIPROT ID: Q6P988	
Isotype: IgG1	Full Name: notum pectinacylesterase homolog (Drosophila)	
Immunogen Catalog Number: AG6338	Calculated MW: 56 kDa	
	Observed MW: 56 kDa	

Applications

Tested Applications:
WB, IHC, Cytometric bead array, Indirect ELISA

Species Specificity:
human

Product Information

66956-1-PBS targets NOTUM as part of a matched antibody pair:

MP50968-3: 66956-2-PBS capture and 66956-1-PBS detection (validated in Cytometric bead array)

Unconjugated mouse monoclonal antibody pair in PBS only (BSA and azide free) storage buffer at a concentration of 1 mg/mL, ready for conjugation.

This conjugation ready format makes antibodies ideal for use in many applications including: ELISAs, multiplex assays requiring matched pairs, mass cytometry, and multiplex imaging applications. Antibody use should be optimized by the end user for each application and assay.

Storage

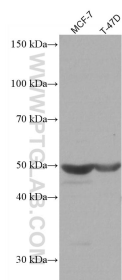
Storage:
Store at -80°C.

Storage Buffer:
PBS Only

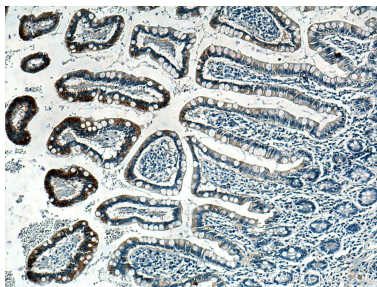
For technical support and original validation data for this product please contact:
T: 1 (888) 4PTGLAB (1-888-478-4522) (toll free in USA), or 1(312) 455-8498 (outside USA)
E: proteintech@ptglab.com
W: ptglab.com

This product is exclusively available under Proteintech Group brand and is not available to purchase from any other manufacturer.

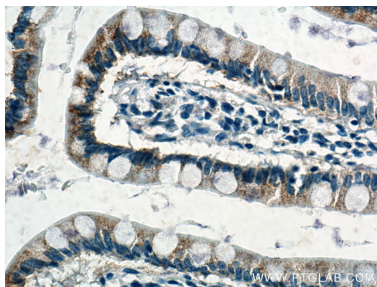
Selected Validation Data



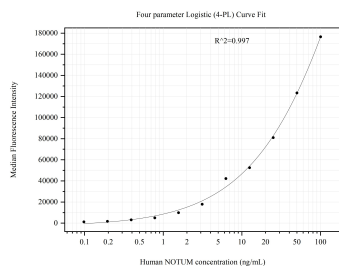
Various lysates were subjected to SDS PAGE followed by western blot with 66956-1-Ig (NOTUM antibody) at dilution of 1:50000 incubated at room temperature for 1.5 hours. This data was developed using the same antibody clone with 66956-1-PBS in a different storage buffer formulation.



Immunohistochemical analysis of paraffin-embedded human small intestine tissue slide using 66956-1-Ig (NOTUM antibody) at dilution of 1:5000 (under 10x lens).. This data was developed using the same antibody clone with 66956-1-PBS in a different storage buffer formulation.



Immunohistochemical analysis of paraffin-embedded human small intestine tissue slide using 66956-1-Ig (NOTUM antibody) at dilution of 1:5000 (under 40x lens).. This data was developed using the same antibody clone with 66956-1-PBS in a different storage buffer formulation.



Cytometric bead array standard curve of MP50968-3, NOTUM Monoclonal Matched Antibody Pair, PBS Only. Capture antibody: 66956-2-PBS. Detection antibody: 66956-1-PBS. Standard:Ag6338. Range: 0.098-100 ng/mL.