

For Research Use Only

LXN Monoclonal antibody

Catalog Number: 66957-1-Ig



Basic Information

Catalog Number:

66957-1-Ig

GenBank Accession Number:

BC005346

Purification Method:

Protein G purification

Size:

150ul, Concentration: 1800 ug/ml by Nanodrop and 1000 ug/ml by Bradford method using BSA as the standard;

GeneID (NCBI):

56925

CloneNo.:

3E5A5

UNIPROT ID:

Q9BS40

Recommended Dilutions:

WB: 1:2000-1:10000

Source:

Mouse

Full Name:

latexin

IHC: 1:250-1:1000

IF/ICC: 1:400-1:1600

Isotype:

IgG1

Calculated MW:

222 aa, 26 kDa

FC (Intra): 0.40 ug per 10⁶ cells in a

100 µl suspension

Immunogen Catalog Number:

AG27922

Observed MW:

30 kDa

Applications

Tested Applications:

WB, IHC, IF/ICC, FC (Intra), ELISA

Species Specificity:

human, pig, rabbit

Note-IHC: suggested antigen retrieval with TE buffer pH 9.0; (*) Alternatively, antigen retrieval may be performed with citrate buffer pH 6.0

Positive Controls:

WB: pig brain tissue, A549 cells, HEK-293 cells, SH-SY5Y cells, rabbit brain tissue, HeLa cells

IHC: human heart tissue,

IF/ICC: HeLa cells,

FC (Intra): HeLa cells,

Background Information

Latexin, also named as LTXN, LXN, ECI, MUM and TCI, is hardly reversible, non-competitive, and potent inhibitor of CPA1, CPA2 and CPA4. It may function as a neuroprotective mechanism against tau toxicity.

Storage

Storage:

Store at -20°C. Stable for one year after shipment.

Storage Buffer:

PBS with 0.02% sodium azide and 50% glycerol, pH7.3

Aliquoting is unnecessary for -20°C storage

*** 20ul sizes contain 0.1% BSA

For technical support and original validation data for this product please contact:

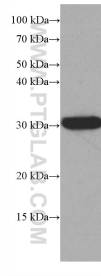
T: 1 (888) 4PTGLAB (1-888-478-4522) (toll free in USA), or 1(312) 455-8498 (outside USA)

E: proteintech@ptglab.com

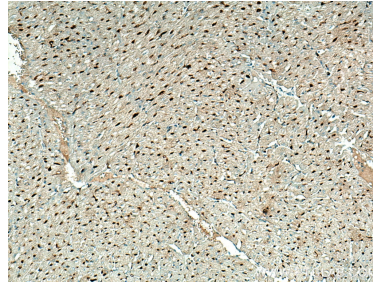
W: ptglab.com

This product is exclusively available under Proteintech Group brand and is not available to purchase from any other manufacturer.

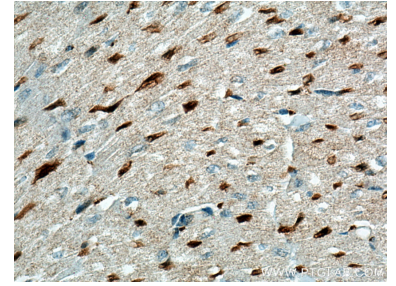
Selected Validation Data



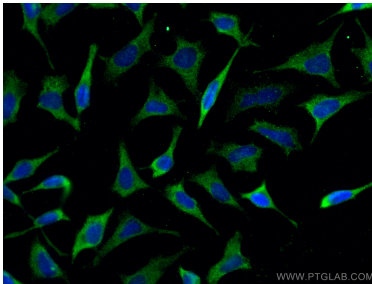
pig brain tissue were subjected to SDS PAGE followed by western blot with 66957-1-Ig (LXN antibody) at dilution of 1:5000 incubated at room temperature for 1.5 hours.



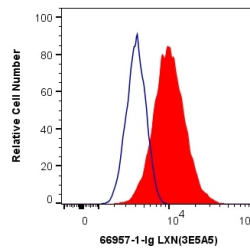
Immunohistochemical analysis of paraffin-embedded human heart tissue slide using 66957-1-Ig (LXN antibody) at dilution of 1:500 (under 10x lens). Heat mediated antigen retrieval with Tris-EDTA buffer (pH 9.0).



Immunohistochemical analysis of paraffin-embedded human heart tissue slide using 66957-1-Ig (LXN antibody) at dilution of 1:500 (under 40x lens). Heat mediated antigen retrieval with Tris-EDTA buffer (pH 9.0).



Immunofluorescent analysis of (-20°C Methanol) fixed HeLa cells using LXN antibody (66957-1-Ig, Clone: 3E5A5) at dilution of 1:800 and CoraLite®488-Conjugated Goat Anti-Mouse IgG(H+L).



1X10⁶ HeLa cells were intracellularly stained with 0.4 ug Anti-Human LXN (66957-1-Ig, Clone:3E5A5) and CoraLite®488-Conjugated Goat Anti-Mouse IgG(H+L) at dilution 1:1000 (red), or 0.4 ug Mouse IgG1 Isotype Control (MOPC-21) (65124-1-Ig, Clone: MOPC-21) (blue). Cells were fixed with 4% PFA and permeabilized with Flow Cytometry Perm Buffer (PF00011-C).