

For Research Use Only

LXN Monoclonal antibody, PBS Only (Capture)



Catalog Number: 66957-1-PBS

Basic Information

Catalog Number: 66957-1-PBS	GenBank Accession Number: BC005346	Purification Method: Protein G purification
Size: 100ug , Concentration: 1mg/ml by Nanodrop;	GeneID (NCBI): 56925	CloneNo.: 3E5A5
Source: Mouse	UNIPROT ID: Q9BS40	
Isotype: IgG1	Full Name: latexin	
Immunogen Catalog Number: AG27922	Calculated MW: 222 aa, 26 kDa	
	Observed MW: 30 kDa	

Applications

Tested Applications:
Indirect ELISA, Sandwich ELISA, IF/ICC, IHC, WB

Species Specificity:
rabbit, pig, human

Product Information

66957-1-PBS targets LXN as part of a matched antibody pair:

MP50023-1: 66957-1-PBS capture and 66957-2-PBS detection (validated in Sandwich ELISA)

Unconjugated mouse monoclonal antibody pair in PBS only (BSA and azide free) storage buffer at a concentration of 1 mg/mL, ready for conjugation.

This conjugation ready format makes antibodies ideal for use in many applications including: ELISAs, multiplex assays requiring matched pairs, mass cytometry, and multiplex imaging applications. Antibody use should be optimized by the end user for each application and assay.

Background Information

Latexin, also named as LTXN, LXN, ECI, MUM and TCI, is hardly reversible, non-competitive, and potent inhibitor of CPA1, CPA2 and CPA4. It may function as a neuroprotective mechanism against tau toxicity.

Storage

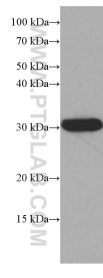
Storage:
Store at -80°C.

Storage Buffer:
100% PBS pH 7.3

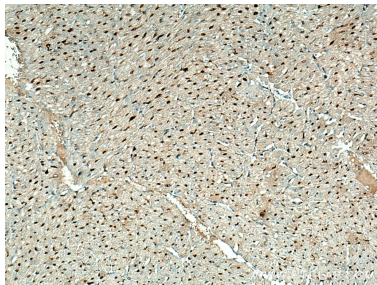
For technical support and original validation data for this product please contact:
T: 1 (888) 4PTGLAB (1-888-478-4522) (toll free in USA), or 1(312) 455-8498 (outside USA)
E: proteintech@ptglab.com
W: ptglab.com

This product is exclusively available under Proteintech Group brand and is not available to purchase from any other manufacturer.

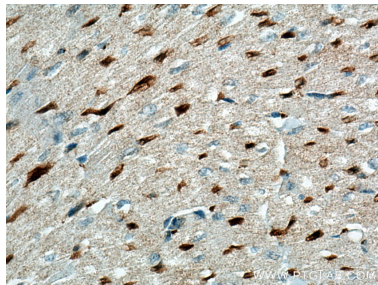
Selected Validation Data



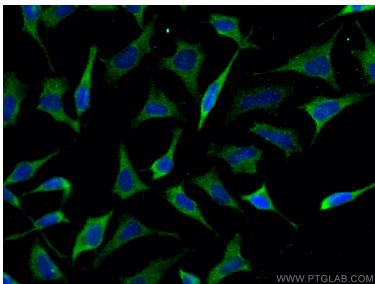
pig brain tissue were subjected to SDS PAGE followed by western blot with 66957-1-Ig (LXN antibody) at dilution of 1:5000 incubated at room temperature for 1.5 hours. This data was developed using the same antibody clone with 66957-1-PBS in a different storage buffer formulation.



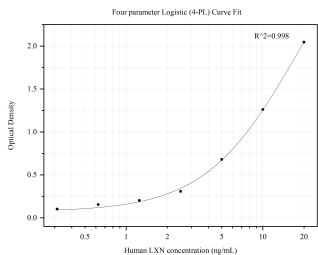
Immunohistochemical analysis of paraffin-embedded human heart tissue slide using 66957-1-Ig (LXN antibody) at dilution of 1:500 (under 10x lens). Heat mediated antigen retrieval with Tris-EDTA buffer (pH 9.0). This data was developed using the same antibody clone with 66957-1-PBS in a different storage buffer formulation.



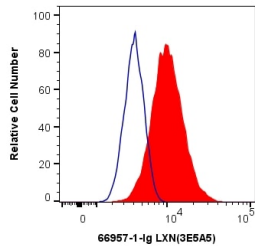
Immunohistochemical analysis of paraffin-embedded human heart tissue slide using 66957-1-Ig (LXN antibody) at dilution of 1:500 (under 40x lens). Heat mediated antigen retrieval with Tris-EDTA buffer (pH 9.0). This data was developed using the same antibody clone with 66957-1-PBS in a different storage buffer formulation.



Immunofluorescent analysis of (-20°C Methanol) fixed HeLa cells using LXN antibody (66957-1-Ig, Clone: 3E5A5) at dilution of 1:800 and CoraLite®488-Conjugated AffiniPure Goat Anti-Mouse IgG(H+L). This data was developed using the same antibody clone with 66957-1-PBS in a different storage buffer formulation.



Sandwich ELISA standard curve ofMP50023-1, LXN Monoclonal Matched Antibody Pair, PBS Only. Capture antibody: 66957-1-PBS. Detection antibody: HRP-conjugated 66957-2-PBS. Standard: Ag27922. Range: 0.313-20 ng/mL.



1X10⁶ HeLa cells were intracellularly stained with 0.4 ug Anti-Human LXN (66957-1-Ig, Clone:3E5A5) and CoraLite®488-Conjugated AffiniPure Goat Anti-Mouse IgG(H+L) at dilution 1:1000 (red), or 0.4 ug Mouse IgG1 Isotype Control (MOPC-21) (65124-1-Ig, Clone: MOPC-21) (blue). Cells were fixed with 4% PFA and permeabilized with Flow Cytometry Perm Buffer (PF00011-C). This data was developed using the same antibody clone with 66957-1-PBS in a