

For Research Use Only

ART1 Monoclonal antibody

Catalog Number: 66958-1-Ig **2 Publications**



Basic Information

Catalog Number: 66958-1-Ig	GenBank Accession Number: NM_004314	Purification Method: Protein A purification
Size: 150ul , Concentration: 1800 ug/ml by 417 Nanodrop and 1000 ug/ml by Bradford method using BSA as the standard;	GeneID (NCBI): 417	CloneNo.: 1D10A8
Source: Mouse	UNIPROT ID: P52961	Recommended Dilutions: WB 1:5000-1:50000 IHC 1:1500-1:6000
Isotype: IgG1	Full Name: ADP-ribosyltransferase 1	
Immunogen Catalog Number: AG28269	Calculated MW: 36 kDa	
	Observed MW: 34-36 kDa	

Applications

Tested Applications: WB, IHC, ELISA	Positive Controls: WB : EC109 cells, HeLa cells, HEK-293 cells, HepG2 cells IHC : human kidney tissue,
Cited Applications: WB, IF, IHC	
Species Specificity: Human	
Cited Species: human, mouse	
Note-IHC: suggested antigen retrieval with TE buffer pH 9.0; (*) Alternatively, antigen retrieval may be performed with citrate buffer pH 6.0	

Background Information

ART1 (ADP-ribosyltransferase 1) is an important mono-ADP-ribose transferase which can catalyze the mono-ADP-ribosylation of proteins including human neutrophil peptide-1 (HNP-1), fibroblast growth factor-2 (FGF-2) and platelet-derived growth factor-BB (PDGF-BB), and play a role in biological processes such as proliferation and invasion of cancer cells.

Notable Publications

Author	Pubmed ID	Journal	Application
Shuxian Zhang	34357465	Med Oncol	WB
Ting Lin	38504172	BMC Cancer	IHC,IF,WB

Storage

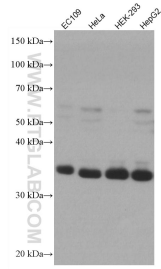
Storage:
Store at -20°C. Stable for one year after shipment.
Storage Buffer:
PBS with 0.02% sodium azide and 50% glycerol pH 7.3.
Aliquoting is unnecessary for -20°C storage

*** 20ul sizes contain 0.1% BSA

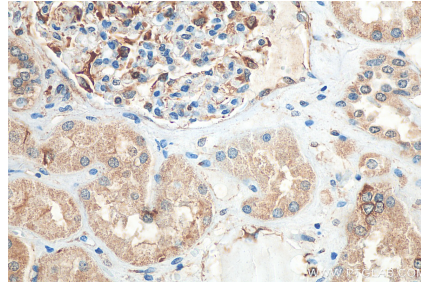
For technical support and original validation data for this product please contact:
T: 1 (888) 4PTGLAB (1-888-478-4522) (toll free in USA), or 1(312) 455-8498 (outside USA)
E: proteintech@ptglab.com
W: ptglab.com

This product is exclusively available under Proteintech Group brand and is not available to purchase from any other manufacturer.

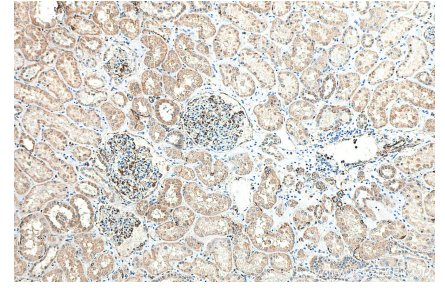
Selected Validation Data



Various lysates were subjected to SDS PAGE followed by western blot with 66958-1-Ig (ART1 antibody) at dilution of 1:20000 incubated at room temperature for 1.5 hours.



Immunohistochemical analysis of paraffin-embedded human kidney tissue slide using 66958-1-Ig (ART1 antibody) at dilution of 1:3000 (under 40x lens). Heat mediated antigen retrieval with Tris-EDTA buffer (pH 9.0).



Immunohistochemical analysis of paraffin-embedded human kidney tissue slide using 66958-1-Ig (ART1 antibody) at dilution of 1:3000 (under 10x lens). Heat mediated antigen retrieval with Tris-EDTA buffer (pH 9.0).