

For Research Use Only

ART1 Monoclonal antibody, PBS Only

Catalog Number: 66958-1-PBS



Basic Information

Catalog Number: 66958-1-PBS	GenBank Accession Number: NM_004314	Purification Method: Protein A purification
Size: 100ug , Concentration: 1 mg/ml by Nanodrop;	GeneID (NCBI): 417	CloneNo.: 1D10A8
Source: Mouse	UNIPROT ID: P52961	
Isotype: IgG1	Full Name: ADP-ribosyltransferase 1	
Immunogen Catalog Number: AG28269	Calculated MW: 36 kDa	
	Observed MW: 34-36 kDa	

Applications

Tested Applications:
WB, IHC, ELISA

Species Specificity:
Human

Background Information

ART1 (ADP-ribosyltransferase 1) is an important mono-ADP-ribose transferase which can catalyze the mono-ADP-ribosylation of proteins including human neutrophil peptide-1 (HNP-1), fibroblast growth factor-2 (FGF-2) and platelet-derived growth factor-BB (PDGF-BB), and play a role in biological processes such as proliferation and invasion of cancer cells.

Storage

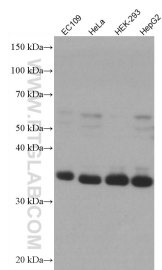
Storage:
Store at -80°C.

Storage Buffer:
PBS only

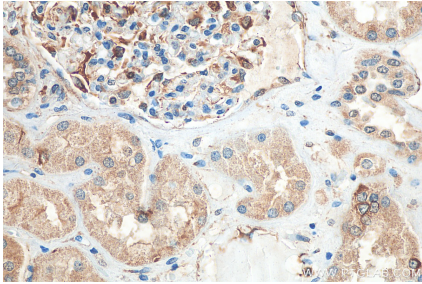
For technical support and original validation data for this product please contact:
T: 1 (888) 4PTGLAB (1-888-478-4522) (toll free in USA), or 1(312) 455-8498 (outside USA)
E: proteintech@ptglab.com
W: ptglab.com

This product is exclusively available under Proteintech Group brand and is not available to purchase from any other manufacturer.

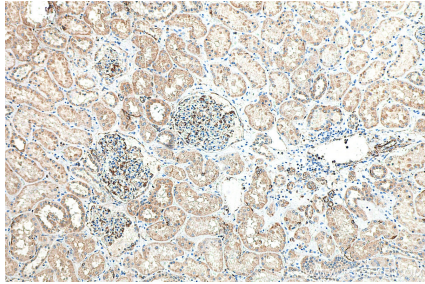
Selected Validation Data



Various lysates were subjected to SDS PAGE followed by western blot with 66958-1-Ig (ART1 antibody) at dilution of 1:20000 incubated at room temperature for 1.5 hours. This data was developed using the same antibody clone with 66958-1-PBS in a different storage buffer formulation.



Immunohistochemical analysis of paraffin-embedded human kidney tissue slide using 66958-1-Ig (ART1 antibody) at dilution of 1:3000 (under 40x lens). Heat mediated antigen retrieval with Tris-EDTA buffer (pH 9.0). This data was developed using the same antibody clone with 66958-1-PBS in a different storage buffer formulation.



Immunohistochemical analysis of paraffin-embedded human kidney tissue slide using 66958-1-Ig (ART1 antibody) at dilution of 1:3000 (under 10x lens). Heat mediated antigen retrieval with Tris-EDTA buffer (pH 9.0). This data was developed using the same antibody clone with 66958-1-PBS in a different storage buffer formulation.