

For Research Use Only

# NDC80 Monoclonal antibody

Catalog Number: 66960-1-Ig



## Basic Information

Catalog Number:

66960-1-Ig

Size:

150ul, Concentration: 3700 ug/ml by Nanodrop and 1000 ug/ml by Bradford method using BSA as the standard;

Source:

Mouse

Isotype:

IgG1

Immunogen Catalog Number:

AG8065

GenBank Accession Number:

BC035617

GeneID (NCBI):

10403

UNIPROT ID:

O14777

Full Name:

NDC80 homolog, kinetochore complex component (S. cerevisiae)

Calculated MW:

74 kDa

Observed MW:

71-74 kDa

Purification Method:

Protein A purification

CloneNo.:

2B7A8

Recommended Dilutions:

WB 1:2000-1:10000

## Applications

Tested Applications:

WB, ELISA

Species Specificity:

Human, rat, mouse

Positive Controls:

WB : HeLa cells, NCCIT cells, HSC-T6 cells, LNCaP cells, Jurkat cells, THP-1 cells

## Storage

Storage:

Store at -20°C. Stable for one year after shipment.

Storage Buffer:

PBS with 0.02% sodium azide and 50% glycerol pH 7.3.

Aliquoting is unnecessary for -20°C storage

\*\*\* 20ul sizes contain 0.1% BSA

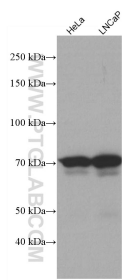
For technical support and original validation data for this product please contact:

T: 1 (888) 4PTGLAB (1-888-478-4522) (toll free in USA), or 1(312) 455-8498 (outside USA)

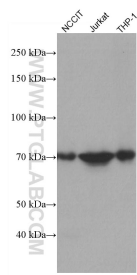
E: [proteintech@ptglab.com](mailto:proteintech@ptglab.com)  
W: [ptglab.com](http://ptglab.com)

This product is exclusively available under Proteintech Group brand and is not available to purchase from any other manufacturer.

## Selected Validation Data



Various lysates were subjected to SDS PAGE followed by western blot with 66960-1-Ig (NDC80 antibody) at dilution of 1:5000 incubated at room temperature for 1.5 hours.



Various lysates were subjected to SDS PAGE followed by western blot with 66960-1-Ig (NDC80 antibody) at dilution of 1:5000 incubated at room temperature for 1.5 hours.