

For Research Use Only

# PAPPA Monoclonal antibody

Catalog Number: 66962-1-Ig

Featured Product

1 Publications



## Basic Information

Catalog Number:

66962-1-Ig

GenBank Accession Number:

BC078657

Purification Method:

Protein A purification

Size:

150ul, Concentration: 1600 ug/ml by 5069

GeneID (NCBI):

5069

CloneNo.:

1G5A7

Nanodrop and 1000 ug/ml by Bradford method using BSA as the standard;

UNIPROT ID:

Q13219

Recommended Dilutions:

WB 1:4000-1:10000

IHC 1:500-1:1000

Source:

Mouse

Full Name:

pregnancy-associated plasma protein

A, pappalysin 1

Isotype:

IgG1

Calculated MW:

1627 aa, 181 kDa

Immunogen Catalog Number:

AG11863

Observed MW:

180-220 kDa

## Applications

Tested Applications:

WB, IHC, ELISA

Positive Controls:

WB : human placenta tissue, MCF-7 cells

Cited Applications:

WB

IHC : human placenta tissue,

Species Specificity:

Human

Cited Species:

human

**Note-IHC: suggested antigen retrieval with TE buffer pH 9.0; (\*) Alternatively, antigen retrieval may be performed with citrate buffer pH 6.0**

## Background Information

Pregnancy-associated plasma protein A (PAPPA) is a metalloproteinase secreted by human placenta, and it can interact with IGF-binding proteins (IGFBPs) to regulate the proteolysis and the bioavailability of insulin-like growth factor (IGF). Circulating PAPPA represents a consolidated biomarker in combined first-trimester screening tests, allowing an early prenatal diagnosis of chromosomal abnormalities, preeclampsia, and intrauterine growth restriction risk. PAPPA is highly expressed in placenta and pregnancy serum (PMID: 34974815, 34974815).

## Notable Publications

Author	Pubmed ID	Journal	Application
Go Itoh	34379869	Mol Oncol	WB

## Storage

Storage:

Store at -20°C. Stable for one year after shipment.

Storage Buffer:

PBS with 0.02% sodium azide and 50% glycerol pH 7.3.

Aliquoting is unnecessary for -20°C storage

\*\*\* 20ul sizes contain 0.1% BSA

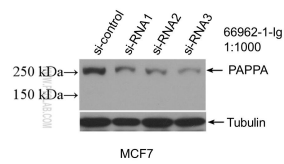
For technical support and original validation data for this product please contact:

T: 1 (888) 4PTGLAB (1-888-478-4522) (toll free in USA), or 1(312) 455-8498 (outside USA)

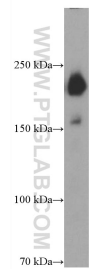
E: [proteintech@ptglab.com](mailto:proteintech@ptglab.com)  
W: [ptglab.com](http://ptglab.com)

This product is exclusively available under Proteintech Group brand and is not available to purchase from any other manufacturer.

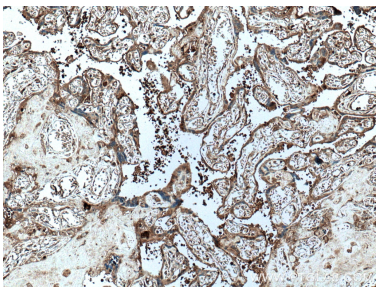
Selected Validation Data



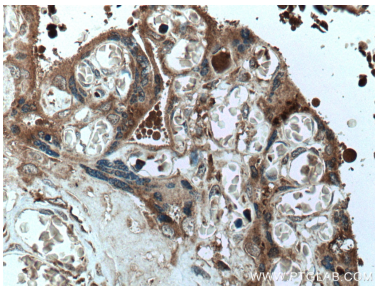
WB result of PAPP-A antibody (66962-1-Ig; 1:1000; incubated at room temperature for 1.5 hours) with sh-Control and sh-PAPPA transfected MCF-7 cells.



human placenta tissue were subjected to SDS PAGE followed by western blot with 66962-1-Ig (PAPP-A antibody) at dilution of 1:4000 incubated at room temperature for 1.5 hours.



Immunohistochemical analysis of paraffin-embedded human placenta tissue slide using 66962-1-Ig (PAPP-A antibody) at dilution of 1:1000 (under 10x lens. Heat mediated antigen retrieval with Tris-EDTA buffer (pH 9.0).



Immunohistochemical analysis of paraffin-embedded human placenta tissue slide using 66962-1-Ig (PAPP-A antibody) at dilution of 1:1000 (under 40x lens. Heat mediated antigen retrieval with Tris-EDTA buffer (pH 9.0).