

For Research Use Only

PAPPA Monoclonal antibody, PBS Only



Catalog Number: 66962-1-PBS

Featured Product

Basic Information

Catalog Number:

66962-1-PBS

Size:

100ug, Concentration: 1 mg/ml by Nanodrop;

Source:

Mouse

Isotype:

IgG1

Immunogen Catalog Number:

AG11863

GenBank Accession Number:

BC078657

GeneID (NCBI):

5069

UNIPROT ID:

Q13219

Full Name:

pregnancy-associated plasma protein A, pappalysin 1

Calculated MW:

1627 aa, 181 kDa

Observed MW:

180-220 kDa

Purification Method:

Protein A purification

CloneNo.:

1G5A7

Applications

Tested Applications:

WB, IHC, ELISA

Species Specificity:

Human

Background Information

Pregnancy-associated plasma protein A (PAPPA) is a metalloproteinase secreted by human placenta, and it can interact with IGF-binding proteins (IGFBPs) to regulate the proteolysis and the bioavailability of insulin-like growth factor (IGF). Circulating PAPPA represents a consolidated biomarker in combined first-trimester screening tests, allowing an early prenatal diagnosis of chromosomal abnormalities, preeclampsia, and intrauterine growth restriction risk. PAPPA is highly expressed in placenta and pregnancy serum (PMID: 34974815, 34974815).

Storage

Storage:

Store at -80°C.

Storage Buffer:

PBS only

For technical support and original validation data for this product please contact:

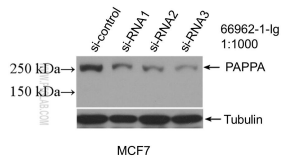
T: 1 (888) 4PTGLAB (1-888-478-4522) (toll free in USA), or 1(312) 455-8498 (outside USA)

E: proteintech@ptglab.com

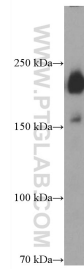
W: ptglab.com

This product is exclusively available under Proteintech Group brand and is not available to purchase from any other manufacturer.

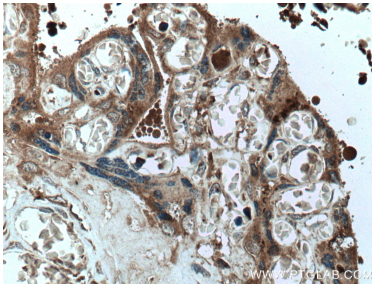
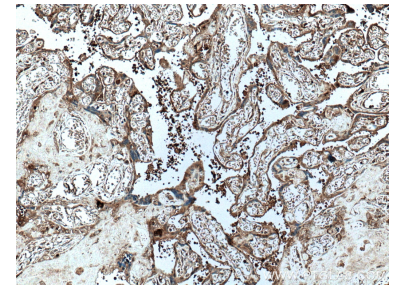
Selected Validation Data



WB result of PAPP-A antibody (66962-1-Ig; 1:1000; incubated at room temperature for 1.5 hours) with sh-Control and sh-PAPPA transfected MCF-7 cells. This data was developed using the same antibody clone with 66962-1-PBS in a different storage buffer formulation.



human placenta tissue were subjected to SDS PAGE followed by western blot with 66962-1-Ig (PAPP-A antibody) at dilution of 1:4000 incubated at room temperature for 1.5 hours. This data was developed using the same antibody clone with 66962-1-PBS in a different storage buffer formulation.



Immunohistochemical analysis of paraffin-embedded human placenta tissue slide using 66962-1-Ig (PAPP-A antibody) at dilution of 1:1000 (under 40x lens. Heat mediated antigen retrieval with Tris-EDTA buffer (pH 9.0). This data was developed using the same antibody clone with 66962-1-PBS in a different storage buffer formulation.