

For Research Use Only

# PARD3 Monoclonal antibody

Catalog Number: 66968-1-Ig



## Basic Information

<b>Catalog Number:</b> 66968-1-Ig	<b>GenBank Accession Number:</b> BC011711	<b>Purification Method:</b> Protein G purification
<b>Size:</b> 150ul , Concentration: 1200 µg/ml by Nanodrop and 1000 µg/ml by Bradford method using BSA as the standard;	<b>GeneID (NCBI):</b> 56288	<b>CloneNo.:</b> 1D2B2
<b>Source:</b> Mouse	<b>Full Name:</b> par-3 partitioning defective 3 homolog (C. elegans)	<b>Recommended Dilutions:</b> WB 1:1000-1:6000 IF 1:400-1:1600
<b>Isotype:</b> IgG1	<b>Calculated MW:</b> 151 kDa	
<b>Immunogen Catalog Number:</b> AG7656	<b>Observed MW:</b> 170 kDa	

## Applications

<b>Tested Applications:</b> IF, WB, ELISA	<b>Positive Controls:</b>
<b>Species Specificity:</b> Human	<b>WB :</b> MCF-7 cells, HeLa cells, HEK-293 cells, A431 cells, HepG2 cells
	<b>IF :</b> MCF-7 cells,

## Background Information

PARD3 (also known as ASIP, Par3, or Bazooka) is one of PARD proteins which are essential for asymmetric cell division and polarized growth. PAR3 is involved in the establishment of cell polarity and in the asymmetric cytokinesis. It plays a role in tight junctions at epithelial cell-cell contacts.

## Storage

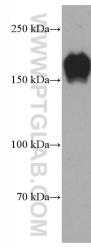
**Storage:**  
Store at -20°C. Stable for one year after shipment.  
**Storage Buffer:**  
PBS with 0.02% sodium azide and 50% glycerol pH 7.3.  
Aliquoting is unnecessary for -20°C storage

\*\*\* 20ul sizes contain 0.1% BSA

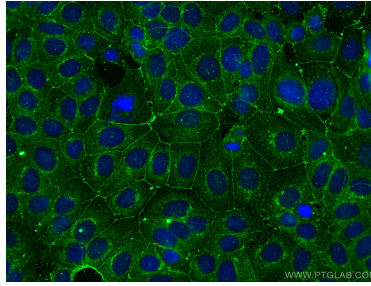
For technical support and original validation data for this product please contact:  
T: 1 (888) 4PTGLAB (1-888-478-4522) (toll free in USA), or 1(312) 455-8498 (outside USA)  
E: proteintech@ptglab.com  
W: ptglab.com

This product is exclusively available under Proteintech Group brand and is not available to purchase from any other manufacturer.

## Selected Validation Data



MCF-7 cells were subjected to SDS PAGE followed by western blot with 66968-1-Ig (PARD3 antibody) at dilution of 1:3000 incubated at room temperature for 1.5 hours.



Immunofluorescent analysis of (-20°C Methanol) fixed MCF-7 cells using PARD3 antibody (66968-1-Ig, Clone: 1D2B2) at dilution of 1:800 and CoraLite®488-Conjugated AffiniPure Goat Anti-Mouse IgG(H+L).