

For Research Use Only

# DOCK2 Monoclonal antibody

Catalog Number: 66969-1-Ig

Featured Product

1 Publications



## Basic Information

<b>Catalog Number:</b> 66969-1-Ig	<b>GenBank Accession Number:</b> BC016996	<b>Purification Method:</b> Protein G purification
<b>Size:</b> 150ul, Concentration: 2000 µg/ml by Nanodrop and 1000 µg/ml by Bradford method using BSA as the standard;	<b>GeneID (NCBI):</b> 1794	<b>CloneNo.:</b> 1D7A8
<b>Source:</b> Mouse	<b>Full Name:</b> dedicator of cytokinesis 2	<b>Recommended Dilutions:</b> WB 1:5000-1:50000 IHC 1:1000-1:4000 IF 1:200-1:800
<b>Isotype:</b> IgG1	<b>Calculated MW:</b> 212 kDa, 38 kDa	
<b>Immunogen Catalog Number:</b> AG28582	<b>Observed MW:</b> 200-210 kDa	

## Applications

<b>Tested Applications:</b> IF, IHC, WB, ELISA	<b>Positive Controls:</b>
<b>Cited Applications:</b> WB	<b>WB:</b> Jurkat cells, HeLa cells, Ramos cells
<b>Species Specificity:</b> Human	<b>IHC:</b> human liver cancer tissue,
<b>Cited Species:</b> human	<b>IF:</b> HeLa cells,
<b>Note-IHC: suggested antigen retrieval with TE buffer pH 9.0; (*) Alternatively, antigen retrieval may be performed with citrate buffer pH 6.0</b>	

## Background Information

DOCK2, also named as KIAA0209, belongs to the DOCK family. It is involved in cytoskeletal rearrangements required for lymphocyte migration in response of chemokines. DOCK2 activates RAC1 and RAC2 small GTPases, probably by functioning as a guanine nucleotide exchange factor (GEF), which exchanges bound GDP for free GTP. DOCK2 may also participate in IL2 transcriptional activation via the activation of RAC2. The antibody is specific to DOCK2.

## Notable Publications

Author	Pubmed ID	Journal	Application
Mengqi Chu	33509274	Stem Cell Res Ther	WB

## Storage

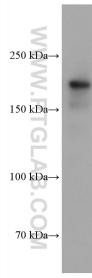
**Storage:**  
Store at -20°C. Stable for one year after shipment.  
**Storage Buffer:**  
PBS with 0.02% sodium azide and 50% glycerol pH 7.3.  
Aliquoting is unnecessary for -20°C storage

\*\*\* 20ul sizes contain 0.1% BSA

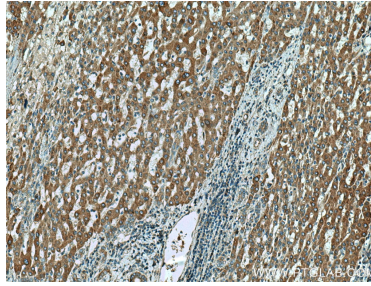
For technical support and original validation data for this product please contact:  
T: 1 (888) 4PTGLAB (1-888-478-4522) (toll free in USA), or 1(312) 455-8498 (outside USA)  
E: proteintech@ptglab.com  
W: ptglab.com

This product is exclusively available under Proteintech Group brand and is not available to purchase from any other manufacturer.

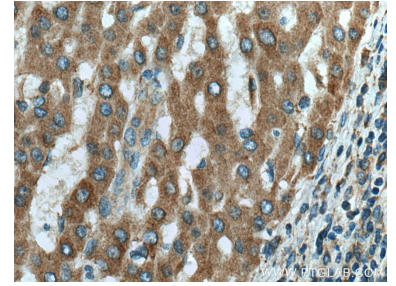
## Selected Validation Data



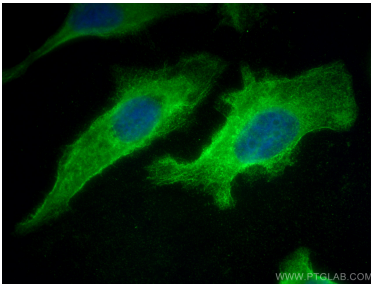
Jurkat cells were subjected to SDS PAGE followed by western blot with 66969-1-Ig (DOCK2 antibody) at dilution of 1:20000 incubated at room temperature for 1.5 hours.



Immunohistochemical analysis of paraffin-embedded human liver cancer tissue slide using 66969-1-Ig (DOCK2 antibody) at dilution of 1:2000 (under 10x lens). Heat mediated antigen retrieval with Tris-EDTA buffer (pH 9.0).



Immunohistochemical analysis of paraffin-embedded human liver cancer tissue slide using 66969-1-Ig (DOCK2 antibody) at dilution of 1:2000 (under 40x lens). Heat mediated antigen retrieval with Tris-EDTA buffer (pH 9.0).



Immunofluorescent analysis of (-20°C Methanol) fixed HeLa cells using DOCK2 antibody (66969-1-Ig, Clone: 1D7A8 ) at dilution of 1:400 and CoraLite®488-Conjugated AffiniPure Goat Anti-Mouse IgG(H+L).