

For Research Use Only

Nephrin Monoclonal antibody

Catalog Number: 66970-1-Ig **9 Publications**



Basic Information

Catalog Number: 66970-1-Ig	GenBank Accession Number: BC156935	Purification Method: Protein G purification
Size: 150ul , Concentration: 2097 µg/ml by Nanodrop and 1000 µg/ml by Bradford method using BSA as the standard;	GeneID (NCBI): 4868	CloneNo.: 1D11H8
Source: Mouse	UNIPROT ID: O60500	Recommended Dilutions: IHC 1:2000-1:8000
Isotype: IgG1	Full Name: nephrosis 1, congenital, Finnish type (nephrin)	
Immunogen Catalog Number: AG19273	Calculated MW: 1241 aa, 135 kDa	

Applications

Tested Applications: IHC, ELISA	Positive Controls: IHC : human kidney tissue,
Cited Applications: WB, IHC, IF	
Species Specificity: human	
Cited Species: human, rat	
Note-IHC: suggested antigen retrieval with TE buffer pH 9.0; (*) Alternatively, antigen retrieval may be performed with citrate buffer pH 6.0	

Background Information

Podocytes are a major component of the glomerular blood filtration barrier. Podocyte protein Nephrin, also known as NPHS1, is the first to be identified as a central component of the slit diaphragm (SD), which is podocyte cell-cell junction. Mutations in Nephrin lead to congenital nephrosis, such as steroid-resistant proteinuria and congenital nephrotic syndrome of the Finnish type (CNF).

Notable Publications

Author	Pubmed ID	Journal	Application
Yanhong Wang	33675865	Mol Cell Endocrinol	WB
Daihe Yang	39702946	Cell Biochem Funct	IF
Xuanxuan Zhang	38925041	Redox Biol	IF

Storage

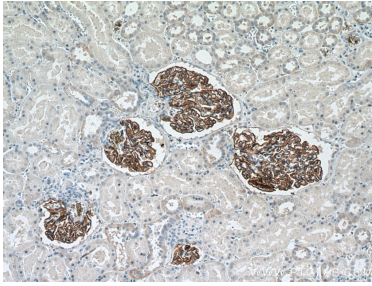
Storage:
Store at -20°C. Stable for one year after shipment.
Storage Buffer:
PBS with 0.02% sodium azide and 50% glycerol pH 7.3.
Aliquoting is unnecessary for -20°C storage

*** 20ul sizes contain 0.1% BSA

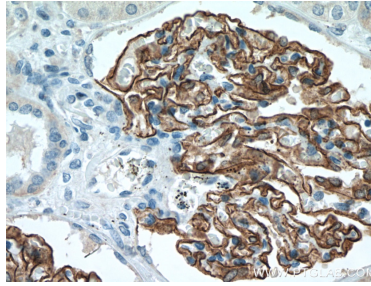
For technical support and original validation data for this product please contact:
T: 1 (888) 4PTGLAB (1-888-478-4522) (toll free in USA), or 1(312) 455-8498 (outside USA)
E: proteintech@ptglab.com
W: ptglab.com

This product is exclusively available under Proteintech Group brand and is not available to purchase from any other manufacturer.

Selected Validation Data



Immunohistochemical analysis of paraffin-embedded human kidney tissue slide using 66970-1-Ig (Nephrin antibody) at dilution of 1:4000 (under 10x lens). Heat mediated antigen retrieval with Tris-EDTA buffer (pH 9.0).



Immunohistochemical analysis of paraffin-embedded human kidney tissue slide using 66970-1-Ig (Nephrin antibody) at dilution of 1:4000 (under 40x lens). Heat mediated antigen retrieval with Tris-EDTA buffer (pH 9.0).