

For Research Use Only

# FTCD Monoclonal antibody, PBS Only

Catalog Number: 66979-1-PBS

Featured Product



## Basic Information

Catalog Number:

66979-1-PBS

Size:

100ug, Concentration: 1 mg/ml by Nanodrop;

Source:

Mouse

Isotype:

IgG2b

Immunogen Catalog Number:

AG17429

GenBank Accession Number:

BC136395

GeneID (NCBI):

10841

UNIPROT ID:

O95954

Full Name:

formiminotransferase  
cyclodeaminase

Calculated MW:

541 aa, 59 kDa

Observed MW:

53-62 kDa

Purification Method:

Protein A purification

CloneNo.:

1H8A1

## Applications

Tested Applications:

WB, IHC, IF-P, Indirect ELISA

Species Specificity:

human, mouse, rat, pig

## Storage

Storage:

Store at -80°C.

Storage Buffer:

PBS Only

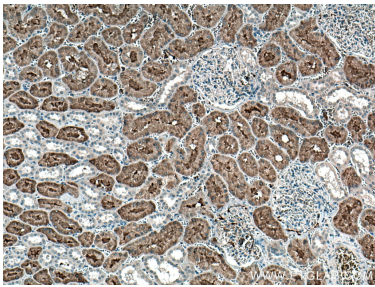
For technical support and original validation data for this product please contact:

T: 1 (888) 4PTGLAB (1-888-478-4522) (toll free  
in USA), or 1(312) 455-8498 (outside USA)

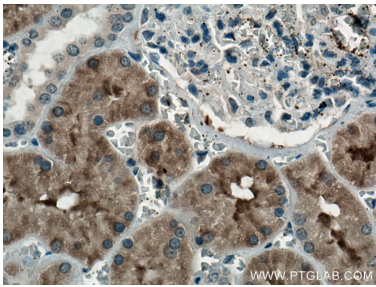
E: [proteintech@ptglab.com](mailto:proteintech@ptglab.com)  
W: [ptglab.com](http://ptglab.com)

This product is exclusively available under Proteintech Group brand and is not available to purchase from any other manufacturer.

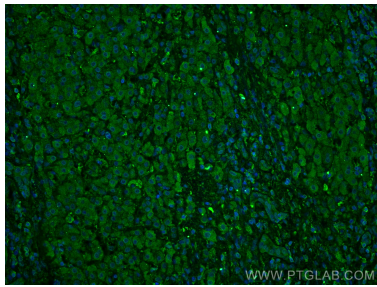
Selected Validation Data



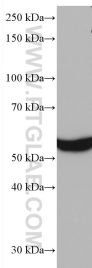
Immunohistochemical analysis of paraffin-embedded human kidney tissue slide using 66979-1-Ig (FTCD antibody) at dilution of 1:300 (under 10x lens). Heat mediated antigen retrieval with Tris-EDTA buffer (pH 9.0). This data was developed using the same antibody clone with 66979-1-PBS in a different storage buffer formulation.



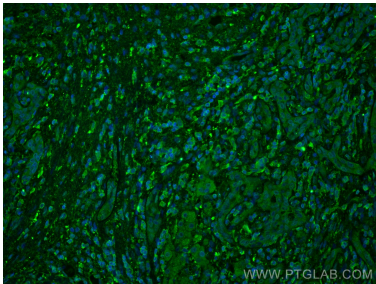
Immunohistochemical analysis of paraffin-embedded human kidney tissue slide using 66979-1-Ig (FTCD antibody) at dilution of 1:300 (under 40x lens). Heat mediated antigen retrieval with Tris-EDTA buffer (pH 9.0). This data was developed using the same antibody clone with 66979-1-PBS in a different storage buffer formulation.



Immunofluorescent analysis of (4% PFA) fixed human liver cancer tissue using FTCD antibody (66979-1-Ig, Clone: 1H8A1 ) at dilution of 1:400 and CoraLite®488-Conjugated AffiniPure Goat Anti-Mouse IgG(H+L). This data was developed using the same antibody clone with 66979-1-PBS in a different storage buffer formulation.



mouse liver tissue were subjected to SDS PAGE followed by western blot with 66979-1-Ig (FTCD antibody) at dilution of 1:3000 incubated at room temperature for 1.5 hours. This data was developed using the same antibody clone with 66979-1-PBS in a different storage buffer formulation.



Immunofluorescent analysis of (4% PFA) fixed human liver cancer tissue using FTCD antibody (66979-1-Ig, Clone: 1H8A1 ) at dilution of 1:400 and CoraLite®488-Conjugated AffiniPure Goat Anti-Mouse IgG(H+L). This data was developed using the same antibody clone with 66979-1-PBS in a different storage buffer formulation.