

For Research Use Only

PREB Monoclonal antibody

Catalog Number: 66981-1-Ig



Basic Information

Catalog Number: 66981-1-Ig	GenBank Accession Number: BC002765	Purification Method: Protein G purification
Size: 150ul , Concentration: 1700 ug/ml by Nanodrop and 1000 ug/ml by Bradford method using BSA as the standard;	GeneID (NCBI): 10113	CloneNo.: 2F6A1
Source: Mouse	UNIPROT ID: Q9HCU5	Recommended Dilutions: WB 1:1000-1:6000 IHC 1:150-1:600
Isotype: IgG1	Full Name: prolactin regulatory element binding	
Immunogen Catalog Number: AG28549	Calculated MW: 45 kDa	
	Observed MW: 45 kDa	

Applications

Tested Applications: WB, IHC, ELISA	Positive Controls:
Species Specificity: Human	WB : Daudi cells, Raji cells, Ramos cells
Note-IHC: suggested antigen retrieval with TE buffer pH 9.0; (*) Alternatively, antigen retrieval may be performed with citrate buffer pH 6.0	IHC : human prostate cancer tissue,

Background Information

PREB contains two PQ-rich potential transactivation domains, but no apparent DNA-binding motif, and exhibits sequence-specific binding to Pit1-binding element of the prolactin (PRL) promoter. It may act as a transcriptional regulator and is thought to be involved in some of the developmental abnormalities observed in patients with partial trisomy 2p.

Storage

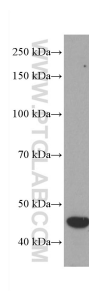
Storage:
Store at -20°C. Stable for one year after shipment.
Storage Buffer:
PBS with 0.02% sodium azide and 50% glycerol pH 7.3.
Aliquoting is unnecessary for -20°C storage

*** 20ul sizes contain 0.1% BSA

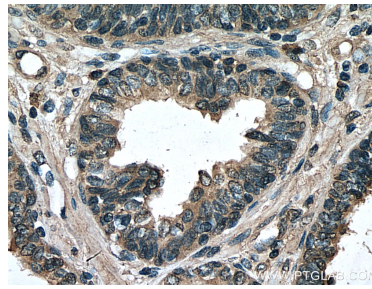
For technical support and original validation data for this product please contact:
T: 1 (888) 4PTGLAB (1-888-478-4522) (toll free in USA), or 1(312) 455-8498 (outside USA)
E: proteintech@ptglab.com
W: ptglab.com

This product is exclusively available under Proteintech Group brand and is not available to purchase from any other manufacturer.

Selected Validation Data



Daudi cells were subjected to SDS PAGE followed by western blot with 66981-1-Ig (PREB antibody) at dilution of 1:3000 incubated at room temperature for 1.5 hours.



Immunohistochemical analysis of paraffin-embedded human prostate cancer tissue slide using 66981-1-Ig (PREB antibody) at dilution of 1:300 (under 40x lens). Heat mediated antigen retrieval with Tris-EDTA buffer (pH 9.0).