

For Research Use Only

# PREB Monoclonal antibody

Catalog Number: 66981-1-Ig



## Basic Information

<b>Catalog Number:</b> 66981-1-Ig	<b>GenBank Accession Number:</b> BC002765	<b>Purification Method:</b> Protein G purification
<b>Size:</b> 150ul , Concentration: 1700 ug/ml by Nanodrop and 1000 ug/ml by Bradford method using BSA as the standard;	<b>GeneID (NCBI):</b> 10113	<b>CloneNo.:</b> 2F6A1
<b>Source:</b> Mouse	<b>UNIPROT ID:</b> Q9HCU5	<b>Recommended Dilutions:</b> WB 1:1000-1:6000 IHC 1:150-1:600
<b>Isotype:</b> IgG1	<b>Full Name:</b> prolactin regulatory element binding	
<b>Immunogen Catalog Number:</b> AG28549	<b>Calculated MW:</b> 45 kDa	
	<b>Observed MW:</b> 45 kDa	

## Applications

<b>Tested Applications:</b> WB, IHC, ELISA	<b>Positive Controls:</b>
<b>Species Specificity:</b> human	<b>WB :</b> Daudi cells, Raji cells, Ramos cells
	<b>IHC :</b> human prostate cancer tissue,

**Note-IHC:** suggested antigen retrieval with **TE buffer pH 9.0; (\*)** Alternatively, antigen retrieval may be performed with **citrate buffer pH 6.0**

## Background Information

PREB contains two PQ-rich potential transactivation domains, but no apparent DNA-binding motif, and exhibits sequence-specific binding to Pit1-binding element of the prolactin (PRL) promoter. It may act as a transcriptional regulator and is thought to be involved in some of the developmental abnormalities observed in patients with partial trisomy 2p.

## Storage

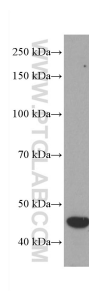
**Storage:**  
Store at -20°C. Stable for one year after shipment.  
**Storage Buffer:**  
PBS with 0.02% sodium azide and 50% glycerol, pH7.3  
Aliquoting is unnecessary for -20°C storage

\*\*\* 20ul sizes contain 0.1% BSA

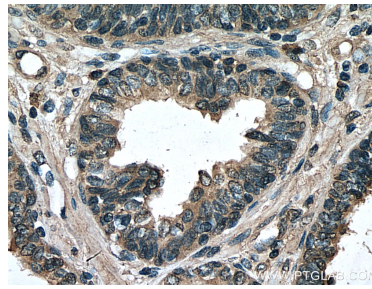
For technical support and original validation data for this product please contact:  
T: 1 (888) 4PTGLAB (1-888-478-4522) (toll free in USA), or 1(312) 455-8498 (outside USA)  
E: proteintech@ptglab.com  
W: ptglab.com

This product is exclusively available under Proteintech Group brand and is not available to purchase from any other manufacturer.

## Selected Validation Data



Daudi cells were subjected to SDS PAGE followed by western blot with 66981-1-Ig (PREB antibody) at dilution of 1:3000 incubated at room temperature for 1.5 hours.



Immunohistochemical analysis of paraffin-embedded human prostate cancer tissue slide using 66981-1-Ig (PREB antibody) at dilution of 1:300 (under 40x lens). Heat mediated antigen retrieval with Tris-EDTA buffer (pH 9.0).