

For Research Use Only

EPHX1 Monoclonal antibody

Catalog Number: 66982-1-Ig

Featured Product



Basic Information

Catalog Number:

66982-1-Ig

GenBank Accession Number:

BC003567

Purification Method:

Protein A purification

Size:

150ul, Concentration: 1500 ug/ml by 2052
Nanodrop and 1000 ug/ml by Bradford
method using BSA as the standard;

GeneID (NCBI):

2052

CloneNo.:

1B6A2

Source:

Mouse

UNIPROT ID:

P07099

Recommended Dilutions:

WB 1:5000-1:50000

Isotype:

IgG2b

Full Name:

epoxide hydrolase 1, microsomal
(xenobiotic)

Immunogen Catalog Number:

AG25820

Calculated MW:

53 kDa

Observed MW:

53 kDa

Applications

Tested Applications:

WB, ELISA

Positive Controls:

WB : HeLa cells, A549 cells, 4T1 cells, HepG2 cells, L02
cells, NCI-H1299 cells

Species Specificity:

Human, Mouse

Background Information

EPHX1, also known as EPHX and EPOX, belongs to the peptidase S33 family. EPHX1 is an evolutionarily highly conserved biotransformation enzyme expressed in nearly all tissues and localized mainly in the microsomal fraction of the endoplasmic reticulum of eukaryotic cells. EPHX1 plays a role in the metabolism of endogenous lipids such as epoxide-containing fatty acids. The calculated molecular weight of EPHX1 is 53 kDa (PMID: 26216302).

Storage

Storage:

Store at -20°C. Stable for one year after shipment.

Storage Buffer:

PBS with 0.1% sodium azide and 50% glycerol pH 7.3.

Aliquoting is unnecessary for -20°C storage

*** 20ul sizes contain 0.1% BSA

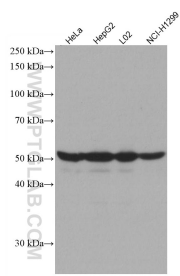
For technical support and original validation data for this product please contact:

T: 1 (888) 4PTGLAB (1-888-478-4522) (toll free
in USA), or 1(312) 455-8498 (outside USA)

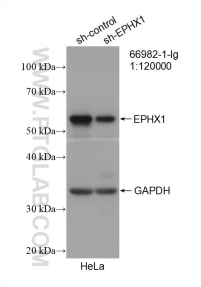
E: proteintech@ptglab.com
W: ptglab.com

This product is exclusively available under Proteintech
Group brand and is not available to purchase from any
other manufacturer.

Selected Validation Data



Various lysates were subjected to SDS PAGE followed by western blot with 66982-1-Ig (EPHX1 antibody) at dilution of 1:10000 incubated at room temperature for 1.5 hours.



WB result of EPHX1 antibody (66982-1-Ig; 1:120000; incubated at room temperature for 1.5 hours) with sh-Control and sh-EPHX1 transfected HeLa cells.