

For Research Use Only

# FBL Monoclonal antibody

Catalog Number: 66985-1-Ig **7 Publications**



## Basic Information

<b>Catalog Number:</b> 66985-1-Ig	<b>GenBank Accession Number:</b> BC019260	<b>Purification Method:</b> Protein G purification
<b>Size:</b> 150ul , Concentration: 1000 ug/ml by Nanodrop;	<b>GeneID (NCBI):</b> 2091	<b>CloneNo.:</b> 3A9E8
<b>Source:</b> Mouse	<b>UNIPROT ID:</b> P22087	<b>Recommended Dilutions:</b> WB 1:5000-1:50000
<b>Isotype:</b> IgG1	<b>Full Name:</b> fibrillarin	IP 0.5-4.0 ug for 1.0-3.0 mg of total protein lysate
<b>Immunogen Catalog Number:</b> AG8841	<b>Calculated MW:</b> 321 aa, 34 kDa	IHC 1:1000-1:4000
	<b>Observed MW:</b> 34 kDa	IF/ICC 1:200-1:800

## Applications

<b>Tested Applications:</b> WB, IHC, IF/ICC, FC (Intra), IP, ELISA	<b>Positive Controls:</b>
<b>Cited Applications:</b> WB, IF, RIP	<b>WB :</b> HeLa cells, HEK-293 cells, HepG2 cells, Jurkat cells, HSC-T6 cells, NIH/3T3 cells, 4T1 cells
<b>Species Specificity:</b> human, mouse, rat	<b>IP :</b> HeLa cells,
<b>Cited Species:</b> human	<b>IHC :</b> human liver cancer tissue,
<b>Note-IHC:</b> suggested antigen retrieval with <b>TE buffer pH 9.0; (*) Alternatively, antigen retrieval may be performed with citrate buffer pH 6.0</b>	<b>IF/ICC :</b> HeLa cells, HepG2 cells

## Background Information

Fibrillarin (Fbl) is an essential nucleolar protein that plays an essential role in ribosome biogenesis and more particularly in the methylation of ribosomal RNAs and rDNA histones. FBL is highly expressed in various cancers and correlates with poor survival outcomes in cancer patients, such as hepatocellular carcinoma (PMID: 33376525). Knockdown of FBL sensitizes tumor cells and xenografts to DNA crosslinking agents, and leads to homologous recombination-mediated DNA repair defects (PMID: 37489617).

## Notable Publications

Author	Pubmed ID	Journal	Application
Tao Shen	34493285	BMC Biol	WB
Wenyi Wang	33687144	Thorac Cancer	WB
Yu-Meng Sun	39579766	Mol Cell	WB, RIP, IF

## Storage

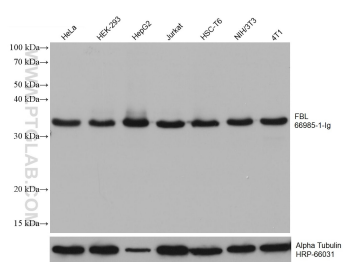
**Storage:**  
Store at -20°C. Stable for one year after shipment.  
**Storage Buffer:**  
PBS with 0.02% sodium azide and 50% glycerol pH 7.3.  
Aliquoting is unnecessary for -20°C storage

\*\*\* 20ul sizes contain 0.1% BSA

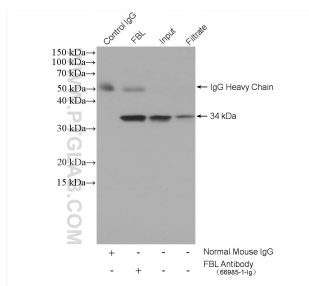
For technical support and original validation data for this product please contact:  
T: 1 (888) 4PTGLAB (1-888-478-4522) (toll free in USA), or 1(312) 455-8498 (outside USA)  
E: proteintech@ptglab.com  
W: ptglab.com

This product is exclusively available under Proteintech Group brand and is not available to purchase from any other manufacturer.

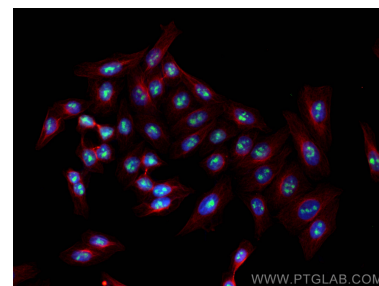
## Selected Validation Data



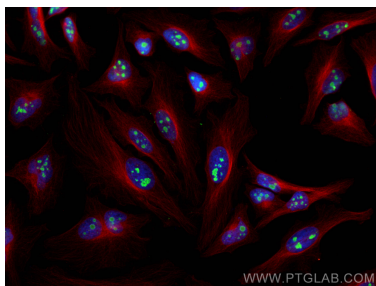
Various lysates were subjected to SDS PAGE followed by western blot with 66985-1-Ig (FBL antibody) at dilution of 1:10000 incubated at room temperature for 1.5 hours. The membrane was stripped and reblotted with HRP-conjugated Alpha Tubulin Monoclonal antibody (HRP-66031) as loading control.



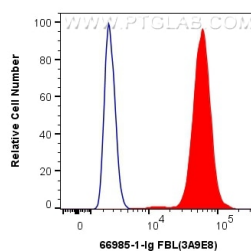
IP result of anti-FBL (IP:66985-1-Ig, 5ug; Detection:66985-1-Ig 1:1000) with HeLa cells lysate 1600 ug.



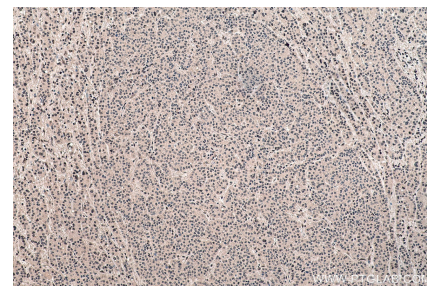
Immunofluorescent analysis of (4% PFA) fixed HepG2 cells using FBL antibody (66985-1-Ig, Clone: 3A9E8) at dilution of 1:400 and CoraLite@488-Conjugated AffiniPure Goat Anti-Mouse IgG(H+L), Alpha Tubulin antibody (11224-1-AP, red).



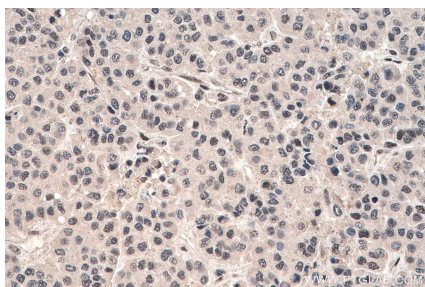
Immunofluorescent analysis of (4% PFA) fixed HeLa cells using FBL antibody (66985-1-Ig, Clone: 3A9E8) at dilution of 1:400 and CoraLite@488-Conjugated AffiniPure Goat Anti-Mouse IgG(H+L), Alpha Tubulin antibody (11224-1-AP, red).



1X10<sup>6</sup> HepG2 cells were intracellularly stained with 0.4 ug Anti-Human FBL (66985-1-Ig, Clone:3A9E8) and CoraLite@488-Conjugated AffiniPure Goat Anti-Mouse IgG(H+L) at dilution 1:1000 (red), or 0.4 ug Mouse IgG1 Isotype Control (MOPC-21) (65124-1-Ig, Clone: MOPC-21) (blue). Cells were fixed and permeabilized with Transcription Factor Staining Buffer Kit (PF00011).



Immunohistochemical analysis of paraffin-embedded human liver cancer tissue slide using 66985-1-Ig (FBL antibody) at dilution of 1:2000 (under 10x lens). Heat mediated antigen retrieval with Tris-EDTA buffer (pH 9.0).



Immunohistochemical analysis of paraffin-embedded human liver cancer tissue slide using 66985-1-Ig (FBL antibody) at dilution of 1:2000 (under 40x lens). Heat mediated antigen retrieval with Tris-EDTA buffer (pH 9.0).