

For Research Use Only

SMC1A Monoclonal antibody

Catalog Number: 66987-1-Ig **1 Publications**



Basic Information

Catalog Number: 66987-1-Ig	GenBank Accession Number: BC112127	Purification Method: Protein A purification
Size: 150ul , Concentration: 1900 µg/ml by Nanodrop and 1000 µg/ml by Bradford method using BSA as the standard;	GeneID (NCBI): 8243	CloneNo.: 1A5D2
Source: Mouse	Full Name: structural maintenance of chromosomes 1A	Recommended Dilutions: WB 1:1000-1:6000 IHC 1:150-1:600
Isotype: IgG2b	Calculated MW: 1233 aa, 143 kDa	
Immunogen Catalog Number: AG17257	Observed MW: 150 kDa	

Applications

Tested Applications: IHC, WB, ELISA	Positive Controls: WB : HeLa cells, HEK-293 cells, HepG2 cells, Jurkat cells, HSC-T6 cells, NIH/3T3 cells, 4T1 cells IHC : human colon cancer tissue,
Cited Applications: WB	
Species Specificity: Human, mouse, rat	
Cited Species: human	

Note-IHC: suggested antigen retrieval with TE buffer pH 9.0; (*) Alternatively, antigen retrieval may be performed with citrate buffer pH 6.0

Background Information

Structural maintenance of chromosomes protein 1A (SMC1A) is involved in chromosome cohesion during cell cycle and in DNA repair. It is a central component of cohesin complex which is required for the cohesion of sister chromatids after DNA replication. The cohesin complex apparently forms a large proteinaceous ring within which sister chromatids can be trapped. At anaphase, the complex is cleaved and dissociates from chromatin, allowing sister chromatids to segregate. The cohesin complex may also play a role in spindle pole assembly during mitosis. Involved in DNA repair via its interaction with BRCA1 and its related phosphorylation by ATM, or via its phosphorylation by ATR. Works as a downstream effector both in the ATM/NBS1 branch and in the ATR/MSH2 branch of S-phase checkpoint.

Notable Publications

Author	Pubmed ID	Journal	Application
Jiayan Fan	31451355	Mol Ther	WB

Storage

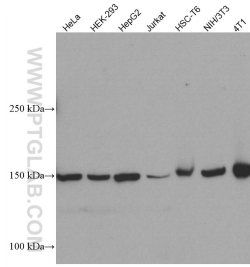
Storage:
Store at -20°C. Stable for one year after shipment.
Storage Buffer:
PBS with 0.02% sodium azide and 50% glycerol pH 7.3.
Aliquoting is unnecessary for -20°C storage

*** 20ul sizes contain 0.1% BSA

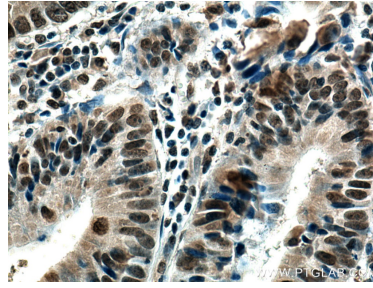
For technical support and original validation data for this product please contact:
T: 1 (888) 4PTGLAB (1-888-478-4522) (toll free in USA), or 1(312) 455-8498 (outside USA)
E: proteintech@ptglab.com
W: ptglab.com

This product is exclusively available under Proteintech Group brand and is not available to purchase from any other manufacturer.

Selected Validation Data



Various lysates were subjected to SDS PAGE followed by western blot with 66987-1-Ig (SMC1A antibody) at dilution of 1:3000 incubated at room temperature for 1.5 hours.



Immunohistochemical analysis of paraffin-embedded human colon cancer tissue slide using 66987-1-Ig (SMC1A antibody) at dilution of 1:300 (under 40x lens). Heat mediated antigen retrieval with Tris-EDTA buffer (pH 9.0).