

For Research Use Only

LHPP Monoclonal antibody

Catalog Number: 66988-1-Ig



Basic Information

Catalog Number:

66988-1-Ig

Size:

150ul , Concentration: 2000 ug/ml by Nanodrop and 913 ug/ml by Bradford method using BSA as the standard;

Source:

Mouse

Isotype:

IgG1

Immunogen Catalog Number:

AG8375

GenBank Accession Number:

BC007324

GeneID (NCBI):

64077

UNIPROT ID:

Q9H008

Full Name:

phospholysine phosphohistidine inorganic pyrophosphate phosphatase

Calculated MW:

23 kDa, 29 kDa

Observed MW:

23-30 kDa

Purification Method:

Protein G purification

CloneNo.:

2A2A4

Recommended Dilutions:

WB 1:1000-1:6000

IF/ICC 1:400-1:1600

Applications

Tested Applications:

WB, IF/ICC, ELISA

Species Specificity:

Mouse, Rat, Pig, human

Positive Controls:

WB : rat liver tissue, pig liver tissue, mouse brain tissue

IF/ICC : HepG2 cells,

Storage

Storage:

Store at -20°C. Stable for one year after shipment.

Storage Buffer:

PBS with 0.02% sodium azide and 50% glycerol pH 7.3.

Aliquoting is unnecessary for -20°C storage

*** 20ul sizes contain 0.1% BSA

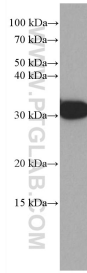
For technical support and original validation data for this product please contact:

T: 1 (888) 4PTGLAB (1-888-478-4522) (toll free in USA), or 1(312) 455-8498 (outside USA)

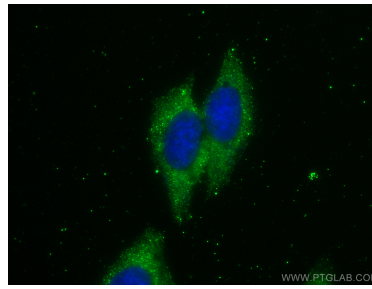
E: proteintech@ptglab.com
W: ptglab.com

This product is exclusively available under Proteintech Group brand and is not available to purchase from any other manufacturer.

Selected Validation Data



rat liver tissue were subjected to SDS PAGE followed by western blot with 66988-1-Ig (LHPP antibody) at dilution of 1:3000 incubated at room temperature for 1.5 hours.



Immunofluorescent analysis of (-20°C Methanol) fixed HepG2 cells using LHPP antibody (66988-1-Ig, Clone: 2A2A4) at dilution of 1:800 and CoraLite®488-Conjugated AffiniPure Goat Anti-Mouse IgG(H+L).