

For Research Use Only

LHPP Monoclonal antibody, PBS Only

Catalog Number: 66988-1-PBS



Basic Information

Catalog Number:

66988-1-PBS

Size:

100ug , Concentration: 1mg/ml by Nanodrop;

Source:

Mouse

Isotype:

IgG1

Immunogen Catalog Number:

AG8375

GenBank Accession Number:

BC007324

GeneID (NCBI):

64077

UNIPROT ID:

Q9H008

Full Name:

phospholysine phosphohistidine
inorganic pyrophosphate phosphatase

Calculated MW:

23 kDa, 29 kDa

Observed MW:

23-30 kDa

Purification Method:

Protein G purification

CloneNo.:

2A2A4

Applications

Tested Applications:

WB, IF, Indirect ELISA

Species Specificity:

Mouse, Rat, Pig, human

Storage

Storage:

Store at -80°C.

Storage Buffer:

PBS Only

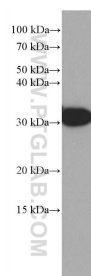
For technical support and original validation data for this product please contact:

T: 1 (888) 4PTGLAB (1-888-478-4522) (toll free
in USA), or 1(312) 455-8498 (outside USA)

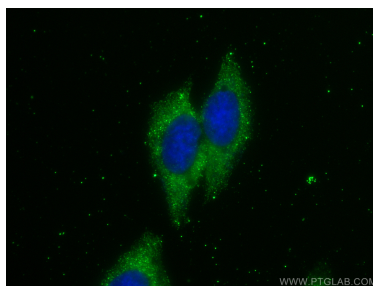
E: proteintech@ptglab.com
W: ptglab.com

This product is exclusively available under Proteintech Group brand and is not available to purchase from any other manufacturer.

Selected Validation Data



rat liver tissue were subjected to SDS PAGE followed by western blot with 66988-1-Ig (LHPP antibody) at dilution of 1:3000 incubated at room temperature for 1.5 hours. This data was developed using the same antibody clone with 66988-1-PBS in a different storage buffer formulation.



Immunofluorescent analysis of (-20°C Methanol) fixed HepG2 cells using LHPP antibody (66988-1-Ig, Clone: 2A2A4) at dilution of 1:800 and CoraLite®488-Conjugated AffiniPure Goat Anti-Mouse IgG(H+L). This data was developed using the same antibody clone with 66988-1-PBS in a different storage buffer formulation.