

For Research Use Only

# CEP63 Monoclonal antibody

Catalog Number: 66996-1-Ig



## Basic Information

<b>Catalog Number:</b> 66996-1-Ig	<b>GenBank Accession Number:</b> BC014050	<b>Purification Method:</b> Protein G purification
<b>Size:</b> 150ul , Concentration: 2400 µg/ml by Nanodrop and 1000 µg/ml by Bradford method using BSA as the standard;	<b>GeneID (NCBI):</b> 80254	<b>CloneNo.:</b> 2G12B2
<b>Source:</b> Mouse	<b>Full Name:</b> centrosomal protein 63kDa	<b>Recommended Dilutions:</b> WB 1:1000-1:6000 IF 1:1000-1:4000
<b>Isotype:</b> IgG1	<b>Calculated MW:</b> 703 aa, 81 kDa	
<b>Immunogen Catalog Number:</b> AG9227	<b>Observed MW:</b> 85 kDa	

## Applications

<b>Tested Applications:</b> IF, WB, ELISA	<b>Positive Controls:</b>
<b>Species Specificity:</b> Human, Mouse, Rat	<b>WB :</b> HeLa cells, MCF-7 cells, T-47D cells, PC-3 cells, HepG2 cells, HSC-T6 cells
	<b>IF :</b> hTERT-RPE1 cells,

## Background Information

CEP63 is required for normal spindle assembly. It maintains centrosome numbers through centrosomal recruitment of CEP152. CEP63 recruits CDK1 to centrosomes. It plays a role in DNA damage response.

## Storage

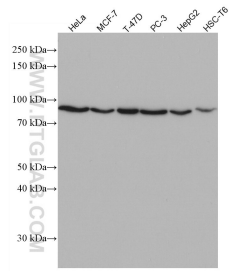
**Storage:**  
Store at -20°C. Stable for one year after shipment.  
**Storage Buffer:**  
PBS with 0.02% sodium azide and 50% glycerol pH 7.3.  
Aliquoting is unnecessary for -20°C storage

**\*\*\* 20ul sizes contain 0.1%BSA**

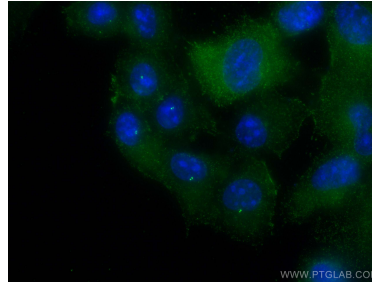
For technical support and original validation data for this product please contact:  
T: 1 (888) 4PTGLAB (1-888-478-4522) (toll free in USA), or 1(312) 455-8498 (outside USA)  
E: proteintech@ptglab.com  
W: ptglab.com

**This product is exclusively available under Proteintech Group brand and is not available to purchase from any other manufacturer.**

## Selected Validation Data



Various lysates were subjected to SDS PAGE followed by western blot with 66996-1-Ig (CEP63 antibody) at dilution of 1:3000 incubated at room temperature for 1.5 hours.



Immunofluorescent analysis of (-20°C Methanol) fixed hTERT-RPE1 cells using CEP63 antibody (66996-1-Ig, Clone: 2G12B2 ) at dilution of 1:2000 and CoraLite® 488-Conjugated AffiniPure Goat Anti-Mouse IgG(H+L).