

For Research Use Only

Neuroserpin Monoclonal antibody, PBS Only



Catalog Number: 66997-1-PBS

Basic Information

Catalog Number: 66997-1-PBS	GenBank Accession Number: BC018043	Purification Method: Protein G purification
Size: 100ug , Concentration: 1 mg/ml by Nanodrop;	GeneID (NCBI): 5274	CloneNo.: 1G4C6
Source: Mouse	UNIPROT ID: Q99574	
Isotype: IgG1	Full Name: serpin peptidase inhibitor, clade I (neuroserpin), member 1	
Immunogen Catalog Number: AG28636	Calculated MW: 410 aa, 47 kDa	
	Observed MW: 46 kDa	

Applications

Tested Applications:
WB, IF, IHC, Indirect ELISA

Species Specificity:
Human, pig, rat

Background Information

Neuroserpin is a member of the serpin family of serine protease inhibitors predominantly expressed in the nervous system, such as the cerebral cortex, hippocampus and the spinal cord. Neuroserpin exerts protective effects in neurons against excitotoxicity both in vitro and in vivo. Its proteolytic inhibitory activity is shown to protect neurons against damage caused by plasmin activation. Mice overexpressing neuroserpin exhibited loss of tPA activity in the brain. Overexpression of neuroserpin in primary neurons leads to increased dendritic arborization and altered dendritic spine shape.

Storage

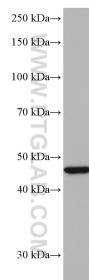
Storage:
Store at -80°C.

Storage Buffer:
PBS Only

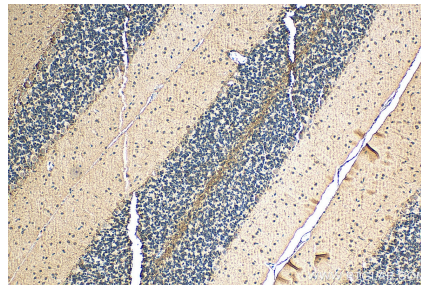
For technical support and original validation data for this product please contact:
T: 1 (888) 4PTGLAB (1-888-478-4522) (toll free in USA), or 1(312) 455-8498 (outside USA)
E: proteintech@ptglab.com
W: ptglab.com

This product is exclusively available under Proteintech Group brand and is not available to purchase from any other manufacturer.

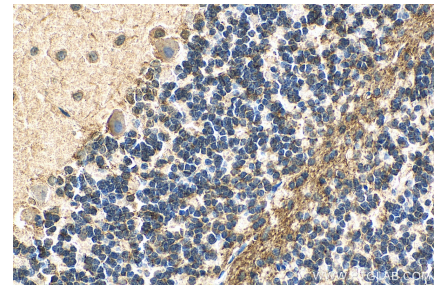
Selected Validation Data



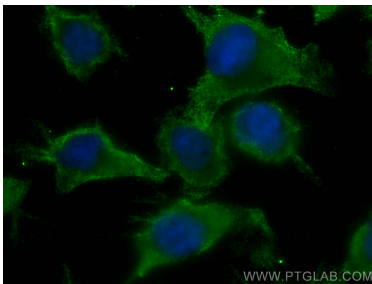
pig brain tissue were subjected to SDS PAGE followed by western blot with 66997-1-Ig (SERPINI1 antibody) at dilution of 1:3000 incubated at room temperature for 1.5 hours. This data was developed using the same antibody clone with 66997-1-PBS in a different storage buffer formulation.



Immunohistochemical analysis of paraffin-embedded rat cerebellum tissue slide using 66997-1-Ig (Neuroserpin antibody) at dilution of 1:300 (under 10x lens). Heat mediated antigen retrieval with Tris-EDTA buffer (pH 9.0). This data was developed using the same antibody clone with 66997-1-PBS in a different storage buffer formulation.



Immunohistochemical analysis of paraffin-embedded rat cerebellum tissue slide using 66997-1-Ig (Neuroserpin antibody) at dilution of 1:300 (under 40x lens). Heat mediated antigen retrieval with Tris-EDTA buffer (pH 9.0). This data was developed using the same antibody clone with 66997-1-PBS in a different storage buffer formulation.



Immunofluorescent analysis of (-20°C Ethanol) fixed U-251 cells using Neuroserpin antibody (66997-1-Ig, Clone: 1G4C6) at dilution of 1:2000 and CoraLite®488-Conjugated AffiniPure Goat Anti-Mouse IgG(H+L). This data was developed using the same antibody clone with 66997-1-PBS in a different storage buffer formulation.