

For Research Use Only

# NUP50 Monoclonal antibody

Catalog Number: 67001-1-Ig **Featured Product**



## Basic Information

<b>Catalog Number:</b> 67001-1-Ig	<b>GenBank Accession Number:</b> BC028125	<b>Purification Method:</b> Protein A purification
<b>Size:</b> 150ul , Concentration: 2000 µg/ml by Nanodrop and 1000 µg/ml by Bradford method using BSA as the standard;	<b>GeneID (NCBI):</b> 10762	<b>CloneNo.:</b> 1D5A7
<b>Source:</b> Mouse	<b>Full Name:</b> nucleoporin 50kDa	<b>Recommended Dilutions:</b> WB 1:5000-1:50000 IHC 1:500-1:2000
<b>Isotype:</b> IgG1	<b>Calculated MW:</b> 468 aa, 50 kDa	
<b>Immunogen Catalog Number:</b> AG15144	<b>Observed MW:</b> 50-55 kDa	

## Applications

<b>Tested Applications:</b> IHC, WB, ELISA	<b>Positive Controls:</b>
<b>Species Specificity:</b> Human, mouse	<b>WB :</b> HCT 116 cells, HeLa cells, HEK-293 cells, Ramos cells, Daudi cells, Sp2/O cells, MCF-7 cells, HT-29 cells, U2OS cells, HepG2 cells, Jurkat cells, MOLT-4 cells, K-562 cells
<b>Note-IHC: suggested antigen retrieval with TE buffer pH 9.0; (*) Alternatively, antigen retrieval may be performed with citrate buffer pH 6.0</b>	<b>IHC :</b> human breast cancer tissue,

## Background Information

Nup50 (also known as Npap60) is a nucleoporin that binds directly to importin  $\alpha$  and their interaction plays an important role in nuclear import. Nup50 is a mobile nucleoporin localized primarily in the nuclear basket of the nuclear pore complex (NPC) and in the nucleoplasm. Human Nup50 has two isoforms: Npap60L (1-469 aa), and its alternatively spliced isoform, Npap60S (29-469 aa) of Npap60L.

## Storage

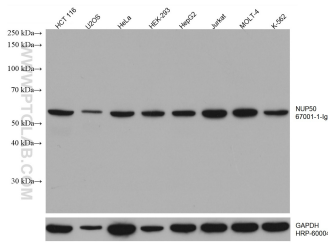
**Storage:**  
Store at -20°C. Stable for one year after shipment.  
**Storage Buffer:**  
PBS with 0.02% sodium azide and 50% glycerol pH 7.3.  
Aliquoting is unnecessary for -20°C storage

\*\*\* 20ul sizes contain 0.1% BSA

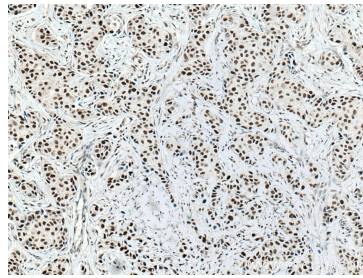
For technical support and original validation data for this product please contact:  
T: 1 (888) 4PTGLAB (1-888-478-4522) (toll free in USA), or 1(312) 455-8498 (outside USA)      E: proteintech@ptglab.com  
W: ptglab.com

This product is exclusively available under Proteintech Group brand and is not available to purchase from any other manufacturer.

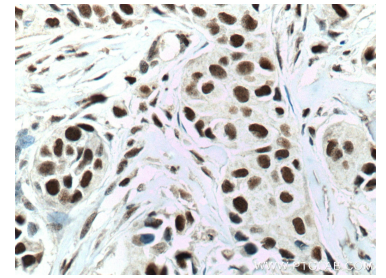
## Selected Validation Data



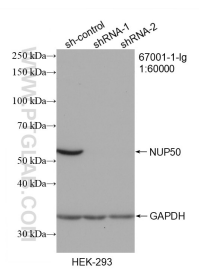
Various lysates were subjected to SDS PAGE followed by western blot with 67001-1-Ig (NUP50 antibody) at dilution of 1:20000 incubated at room temperature for 1.5 hours. The membrane was stripped and reblotted with HRP-conjugated GAPDH Monoclonal antibody (HRP-60004) as loading control.



Immunohistochemical analysis of paraffin-embedded human breast cancer tissue slide using 67001-1-Ig (NUP50 antibody) at dilution of 1:1000 (under 10x lens. Heat mediated antigen retrieval with Tris-EDTA buffer (pH 9.0).



Immunohistochemical analysis of paraffin-embedded human breast cancer tissue slide using 67001-1-Ig (NUP50 antibody) at dilution of 1:1000 (under 40x lens. Heat mediated antigen retrieval with Tris-EDTA buffer (pH 9.0).



WB result of NUP50 antibody (67001-1-Ig; 1:60000; incubated at room temperature for 1.5 hours) with sh-Control and sh-NUP50 transfected HEK-293 cells.