

For Research Use Only

fetuin-B Monoclonal antibody, PBS Only

Catalog Number: 67002-1-PBS



Basic Information

Catalog Number: 67002-1-PBS	GenBank Accession Number: BC074734	Purification Method: Protein A purification
Size: 100ug , Concentration: 1mg/ml by Nanodrop;	GeneID (NCBI): 26998	CloneNo.: 2H7D11
Source: Mouse	UNIPROT ID: Q9UGM5	
Isotype: IgG2b	Full Name: fetuin B	
Immunogen Catalog Number: AG12463	Calculated MW: 382 aa, 42 kDa	
	Observed MW: 50 kDa	

Applications

Tested Applications:
WB, IHC, IF/ICC, IF-P, Indirect ELISA

Species Specificity:
human, rabbit

Background Information

Fetuin A and B are both members of the cystatin superfamily. They are mainly expressed in the liver (hepatokines), as well as other tissues such as the kidneys, tongue, and placenta. Fetuin-B has been identified as a novel adipokine/hepatokine that significantly increases hepatic steatosis and mediates impaired insulin action and glucose intolerance. (PMID: 36915725, PMID: 35702137)

Storage

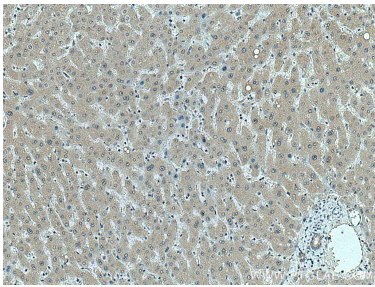
Storage:
Store at -80°C.

Storage Buffer:
PBS Only

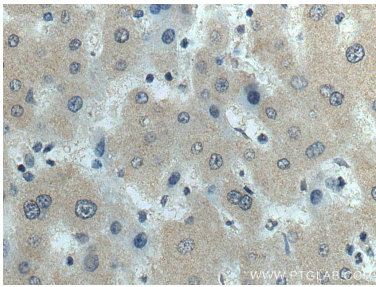
For technical support and original validation data for this product please contact:
T: 1 (888) 4PTGLAB (1-888-478-4522) (toll free in USA), or 1(312) 455-8498 (outside USA)
E: proteintech@ptglab.com
W: ptglab.com

This product is exclusively available under Proteintech Group brand and is not available to purchase from any other manufacturer.

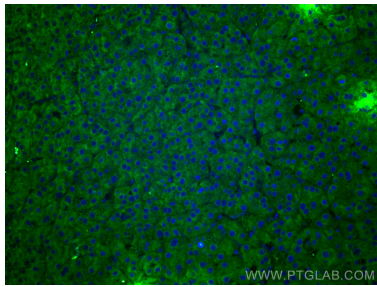
Selected Validation Data



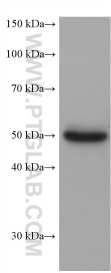
Immunohistochemical analysis of paraffin-embedded human liver tissue slide using 67002-1-Ig (fetuin-B antibody) at dilution of 1:300 (under 10x lens). Heat mediated antigen retrieval with Tris-EDTA buffer (pH 9.0). This data was developed using the same antibody clone with 67002-1-PBS in a different storage buffer formulation.



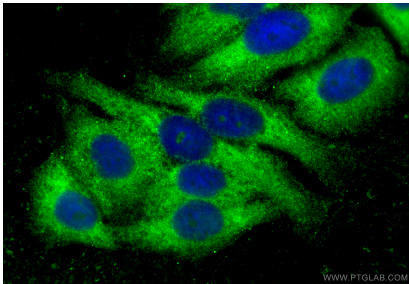
Immunohistochemical analysis of paraffin-embedded human liver tissue slide using 67002-1-Ig (fetuin-B antibody) at dilution of 1:300 (under 40x lens). Heat mediated antigen retrieval with Tris-EDTA buffer (pH 9.0). This data was developed using the same antibody clone with 67002-1-PBS in a different storage buffer formulation.



Immunofluorescent analysis of (4% PFA) fixed human liver cancer tissue using fetuin-B antibody (67002-1-Ig, Clone: 2H7D11) at dilution of 1:400 and CoraLite®488-Conjugated AffiniPure Goat Anti-Mouse IgG(H+L). This data was developed using the same antibody clone with 67002-1-PBS in a different storage buffer formulation.



human plasma were subjected to SDS PAGE followed by western blot with 67002-1-Ig (fetuin-B antibody) at dilution of 1:10000 incubated at room temperature for 1.5 hours. This data was developed using the same antibody clone with 67002-1-PBS in a different storage buffer formulation.



Immunofluorescent analysis of (-20°C Ethanol) fixed HepG2 cells using fetuin-B antibody (67002-1-Ig, Clone: 2H7D11) at dilution of 1:800 and CoraLite®488-Conjugated Goat Anti-Mouse IgG(H+L) (SA00013-1). This data was developed using the same antibody clone with 67002-1-PBS in a different storage buffer formulation.