

For Research Use Only

RRM2 Monoclonal antibody, PBS Only

Catalog Number: 67006-1-PBS



Basic Information

Catalog Number: 67006-1-PBS	GenBank Accession Number: BC030154	Purification Method: Protein A purification
Size: 100ug, Concentration: 1mg/ml by Nanodrop;	GeneID (NCBI): 6241	CloneNo.: 2A9A7
Source: Mouse	UNIPROT ID: P31350	
Isotype: IgG1	Full Name: ribonucleotide reductase M2 polypeptide	
Immunogen Catalog Number: AG28664	Calculated MW: 389 aa, 45 kDa	
	Observed MW: 45 kDa	

Applications

Tested Applications:
WB, IHC, IF/ICC, IP, ELISA

Species Specificity:
human

Background Information

Ribonucleotide reductase M2 subunit is one of two subunits that constitute ribonucleotide reductase, the enzyme that catalyzes the conversion of ribonucleotide 5'-diphosphates into 2'-deoxyribonucleotides, a rate-limiting step in the production of 2'-deoxyribonucleoside 5'-diphosphates (dNTP) required for DNA synthesis and repair that is required for DNA synthesis and repair [PMID:20825972, 19250552]. RRM2 is only expressed during the late G1/early S phase, and degraded in late S phase, and the activity of RNR, and therefore DNA synthesis and cell proliferation, is controlled during the cell cycle by the synthesis and degradation of RRM2 subunit [PMID:3894352].

Storage

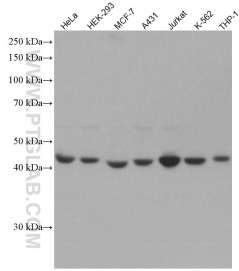
Storage:
Store at -80°C.

Storage Buffer:
PBS Only

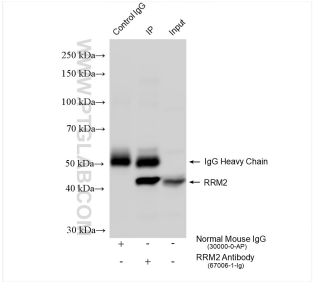
For technical support and original validation data for this product please contact:
T: 1 (888) 4PTGLAB (1-888-478-4522) (toll free in USA), or 1(312) 455-8498 (outside USA)
E: proteintech@ptglab.com
W: ptglab.com

This product is exclusively available under Proteintech Group brand and is not available to purchase from any other manufacturer.

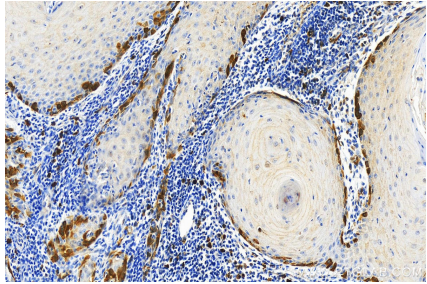
Selected Validation Data



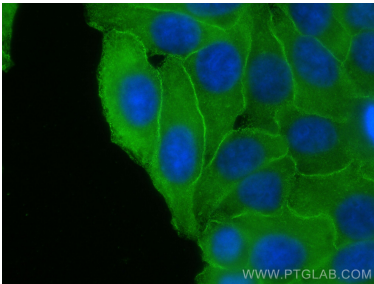
Various lysates were subjected to SDS PAGE followed by western blot with 67006-1-Ig (RRM2 antibody) at dilution of 1:20000 incubated at room temperature for 1.5 hours. This data was developed using the same antibody clone with 67006-1-PBS in a different storage buffer formulation.



IP result of anti-RRM2 (IP:67006-1-Ig, 4ug; Detection:67006-1-Ig 1:2000) with HEK-293 cells lysate 1470 ug. This data was developed using the same antibody clone with 67006-1-PBS in a different storage buffer formulation.



Immunohistochemical analysis of paraffin-embedded skin cancer slide using 67006-1-Ig (RRM2 antibody) at dilution of 1:4000 (under 20x lens). Heat mediated antigen retrieval with Tris-EDTA buffer (pH 9.0). This data was developed using the same antibody clone with 67006-1-PBS in a different storage buffer formulation.



Immunofluorescent analysis of (-20°C Ethanol) fixed HepG2 cells using RRM2 antibody (67006-1-Ig, Clone: 2A9A7) at dilution of 1:400 and Multi-rAb CoraLite ® Plus 488-Goat Anti-Mouse Recombinant Secondary Antibody (H+L) (RGAM002). This data was developed using the same antibody clone with 67006-1-PBS in a different storage buffer formulation.