

For Research Use Only

Endothelin 1 Monoclonal antibody

Catalog Number: 67008-1-Ig **3 Publications**



Basic Information

Catalog Number: 67008-1-Ig	GenBank Accession Number: BC009720	Purification Method: Protein G purification
Size: 150ul , Concentration: 1000 µg/ml by Bradford method using BSA as the standard;	GeneID (NCBI): 1906	CloneNo.: 2C5B3
Source: Mouse	UNIPROT ID: P05305	Recommended Dilutions: WB 1:1000-1:4000
Isotype: IgG1	Full Name: endothelin 1	
Immunogen Catalog Number: AG28334	Calculated MW: 212 aa, 24 kDa	
	Observed MW: 24 kDa	

Applications

Tested Applications: WB, ELISA	Positive Controls: WB : human placenta tissue,
Cited Applications: WB	
Species Specificity: Human	
Cited Species: human, mouse	

Background Information

EDN1, also named as Endothelin-1, PPET1 and ET-1, belongs to the endothelin/sarafotoxin family. Endothelins are endothelium-derived vasoconstrictor peptides. Emerging basic science, and animal and human data all suggest that EDN1 is a potentially important contributor in the pathobiology of fibrosing disorders, including those that affect the lung (PMID:20055532).

Notable Publications

Author	Pubmed ID	Journal	Application
Ying Xue	35950100	Biomed Rep	WB
Dandan Wang	38387427	J Trace Elem Med Biol	WB
Zheng Wang	37188751	Hypertens Res	WB

Storage

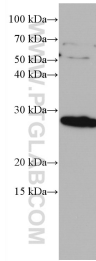
Storage:
Store at -20°C.
Storage Buffer:
PBS with 0.02% sodium azide and 50% glycerol pH 7.3.
Aliquoting is unnecessary for -20°C storage

*** 20ul sizes contain 0.1% BSA

For technical support and original validation data for this product please contact:
T: 1 (888) 4PTGLAB (1-888-478-4522) (toll free in USA), or 1(312) 455-8498 (outside USA)
E: proteintech@ptglab.com
W: ptglab.com

This product is exclusively available under Proteintech Group brand and is not available to purchase from any other manufacturer.

Selected Validation Data



human placenta tissue were subjected to SDS PAGE followed by western blot with 67008-1-Ig (EDN1 antibody) at dilution of 1:2000 incubated at room temperature for 1.5 hours.