

For Research Use Only

# KIF5A Monoclonal antibody

Catalog Number: 67009-1-Ig



## Basic Information

<b>Catalog Number:</b> 67009-1-Ig	<b>GenBank Accession Number:</b> BC146670	<b>Purification Method:</b> Protein G purification
<b>Size:</b> 150ul , Concentration: 1900 ug/ml by 3798 Nanodrop and 1000 ug/ml by Bradford method using BSA as the standard;	<b>GeneID (NCBI):</b> 3798	<b>CloneNo.:</b> 1A7E3
<b>Source:</b> Mouse	<b>UNIPROT ID:</b> Q12840	<b>Recommended Dilutions:</b> WB 1:500-1:3000 IF/ICC 1:400-1:1600
<b>Isotype:</b> IgG1	<b>Full Name:</b> kinesin family member 5A	
<b>Immunogen Catalog Number:</b> AG15682	<b>Calculated MW:</b> 1032 aa, 117 kDa	
	<b>Observed MW:</b> 130 kDa	

## Applications

<b>Tested Applications:</b> WB, IF/ICC, ELISA	<b>Positive Controls:</b>
<b>Species Specificity:</b> Human, mouse, rat, pig	<b>WB :</b> rat brain tissue, pig brain tissue, rat cerebellum tissue, mouse brain tissue
	<b>IF/ICC :</b> PC-12 cells,

## Background Information

Kinesin superfamily proteins (KIFs) are microtubule-based molecular motors essential for the intracellular transport of various cargos, including organelles, proteins, and RNAs. KIF5A is expressed exclusively in neurons and transports neuronal cargoes into axons and dendrites. KIF5A mutations have been associated with Charcot-Marie-Tooth Type 2, an axonal peripheral neuropathy characterized by progressive loss of peripheral sensation and muscle wasting.

## Storage

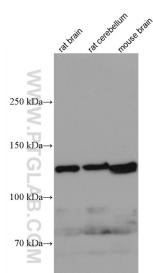
**Storage:**  
Store at -20°C. Stable for one year after shipment.  
**Storage Buffer:**  
PBS with 0.02% sodium azide and 50% glycerol pH 7.3.  
Aliquoting is unnecessary for -20°C storage

\*\*\* 20ul sizes contain 0.1% BSA

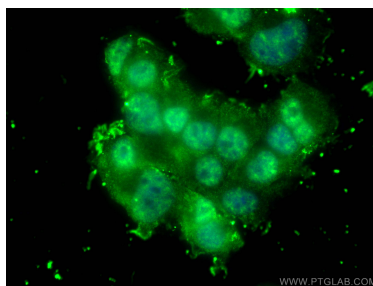
For technical support and original validation data for this product please contact:  
T: 1 (888) 4PTGLAB (1-888-478-4522) (toll free in USA), or 1(312) 455-8498 (outside USA)  
E: [proteintech@ptglab.com](mailto:proteintech@ptglab.com)  
W: [ptglab.com](http://ptglab.com)

This product is exclusively available under Proteintech Group brand and is not available to purchase from any other manufacturer.

## Selected Validation Data



Various lysates were subjected to SDS PAGE followed by western blot with 67009-1-Ig (KIF5A antibody) at dilution of 1:3000 incubated at room temperature for 1.5 hours.



Immunofluorescent analysis of (4% PFA) fixed PC-12 cells using KIF5A antibody (67009-1-Ig, Clone: 1A7E3 ) at dilution of 1:800 and CoraLite®488-Conjugated Goat Anti-Mouse IgG(H+L).