

For Research Use Only

# RASGRF1 Monoclonal antibody

Catalog Number: 67010-1-Ig



## Basic Information

Catalog Number:

67010-1-Ig

Size:

150ul, Concentration: 2500 ug/ml by 5923  
Nanodrop and 1000 ug/ml by Bradford  
method using BSA as the standard;

Source:

Mouse

Isotype:

IgG1

Immunogen Catalog Number:

AG6937

GenBank Accession Number:

BC040275

GeneID (NCBI):

5923

UNIPROT ID:

Q13972

Full Name:

Ras protein-specific guanine  
nucleotide-releasing factor 1

Calculated MW:

134 kDa

Observed MW:

145 kDa

Purification Method:

Protein A purification

CloneNo.:

1A4D4

Recommended Dilutions:

WB 1:1000-1:6000

## Applications

Tested Applications:

WB, ELISA

Species Specificity:

rat, pig, Human

Positive Controls:

WB: pig cerebellum tissue, pig brain tissue, rat brain  
tissue, rat cerebellum tissue

## Background Information

RasGRF1, a member of calmodulin-activated guanine-nucleotide exchange factors (GEFs), highly expressed at the synaptic junctions of the central nervous system (CNS). It is similar to the *Saccharomyces cerevisiae* CDC25. RASGRF1 serves as an in vivo activator for H-RAS and members of the R-RAS and RAC subfamilies. Several studies have shown that RasGRF1 also binds to microtubules and participate in the regulation of neurite outgrowth. RasGRF1 has been implicated in neuronal excitability. The studies of the similar gene in mouse suggested that the Ras-GEF activity of this protein in brain can be activated by Ca<sup>2+</sup> influx, muscarinic receptors, and G protein beta-gamma subunit. Mouse studies also indicated that the Ras-GEF signaling pathway mediated by this protein may be important for long-term memory.

## Storage

Storage:

Store at -20°C. Stable for one year after shipment.

Storage Buffer:

PBS with 0.02% sodium azide and 50% glycerol pH 7.3.

Aliquoting is unnecessary for -20°C storage

\*\*\* 20ul sizes contain 0.1% BSA

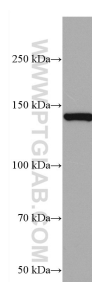
For technical support and original validation data for this product please contact:

T: 1 (888) 4PTGLAB (1-888-478-4522) (toll free  
in USA), or 1(312) 455-8498 (outside USA)

E: [proteintech@ptglab.com](mailto:proteintech@ptglab.com)  
W: [ptglab.com](http://ptglab.com)

This product is exclusively available under Proteintech Group brand and is not available to purchase from any other manufacturer.

## Selected Validation Data



pig cerebellum tissue were subjected to SDS PAGE followed by western blot with 67010-1-Ig (RASGRF1 antibody) at dilution of 1:3000 incubated at room temperature for 1.5 hours.