

For Research Use Only

# PLCG2 Monoclonal antibody

Catalog Number: 67011-1-Ig

Featured Product

2 Publications



## Basic Information

Catalog Number:

67011-1-Ig

Size:

150ul, Concentration: 1900 ug/ml by

Nanodrop and 1000 ug/ml by Bradford

method using BSA as the standard;

Source:

Mouse

Isotype:

IgG1

Immunogen Catalog Number:

AG24355

GenBank Accession Number:

BC007565

GeneID (NCBI):

5336

UNIPROT ID:

P16885

Full Name:

phospholipase C, gamma 2

(phosphatidylinositol-specific)

Calculated MW:

148 kDa

Observed MW:

148 kDa

Purification Method:

Protein A purification

CloneNo.:

2F8H5

Recommended Dilutions:

WB 1:1000-1:4000

IHC 1:50-1:500

## Applications

Tested Applications:

WB, IHC, ELISA

Cited Applications:

WB

Species Specificity:

human

Cited Species:

human

**Note-IHC: suggested antigen retrieval with TE buffer pH 9.0; (\*) Alternatively, antigen retrieval may be performed with citrate buffer pH 6.0**

Positive Controls:

WB : Ramos cells, Raji cells, Karpas-422 cells, rabbit spleen tissue, Daudi cells

IHC : human tonsillitis tissue,

## Background Information

Phospholipase C-gamma2 (PLCG2) is a transmembrane signaling enzyme that catalyzes the conversion of 1-phosphatidyl-1D-myo-inositol 4,5-bisphosphate to 1D-myo-inositol 1,4,5-trisphosphate (IP3) and diacylglycerol (DAG) using calcium as a cofactor. IP3 and DAG are second messenger molecules important for transmitting signals from growth factor receptors and immune system receptors across the cell membrane. Mutations in this gene have been found in autoinflammation, antibody deficiency, and immune dysregulation syndrome and familial cold autoinflammatory syndrome 3.

## Notable Publications

Author	Pubmed ID	Journal	Application
Rui Ye	38956415	Nat Commun	WB
Yuuki Obata	37616163	Cell Rep	WB

## Storage

Storage:

Store at -20°C. Stable for one year after shipment.

Storage Buffer:

PBS with 0.02% sodium azide and 50% glycerol pH 7.3.

Aliquoting is unnecessary for -20°C storage

\*\*\* 20ul sizes contain 0.1% BSA

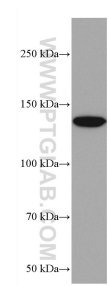
For technical support and original validation data for this product please contact:

T: 1 (888) 4PTGLAB (1-888-478-4522) (toll free in USA), or 1(312) 455-8498 (outside USA)

E: [proteintech@ptglab.com](mailto:proteintech@ptglab.com)  
W: [ptglab.com](http://ptglab.com)

This product is exclusively available under Proteintech Group brand and is not available to purchase from any other manufacturer.

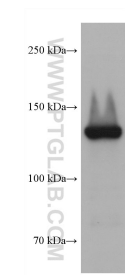
Selected Validation Data



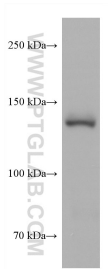
Ramos cells were subjected to SDS PAGE followed by western blot with 67011-1-Ig (PLCG2 antibody) at dilution of 1:2000 incubated at room temperature for 1.5 hours.



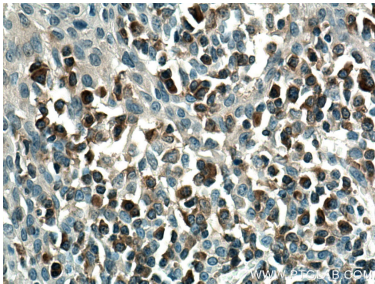
Immunohistochemical analysis of paraffin-embedded human tonsillitis tissue slide using 67011-1-Ig (PLCG2 antibody) at dilution of 1:200 (under 10x lens). Heat mediated antigen retrieval with Tris-EDTA buffer (pH 9.0).



Karpas-422 cells were subjected to SDS PAGE followed by western blot with 67011-1-Ig (PLCG2 antibody) at dilution of 1:2000 incubated at room temperature for 1.5 hours.



Rabbit spleen tissue was subjected to SDS PAGE followed by western blot with 67011-1-Ig (PLCG2 antibody) at dilution of 1:2000 incubated at room temperature for 1.5 hours.



Immunohistochemical analysis of paraffin-embedded human tonsillitis tissue slide using 67011-1-Ig (PLCG2 antibody) at dilution of 1:200 (under 40x lens). Heat mediated antigen retrieval with Tris-EDTA buffer (pH 9.0).