

For Research Use Only

PLCG2 Monoclonal antibody, PBS Only

Catalog Number: 67011-1-PBS

Featured Product



Basic Information

Catalog Number:

67011-1-PBS

Size:

100ug, Concentration: 1 mg/ml by Nanodrop;

Source:

Mouse

Isotype:

IgG1

Immunogen Catalog Number:

AG24355

GenBank Accession Number:

BC007565

GeneID (NCBI):

5336

UNIPROT ID:

P16885

Full Name:

phospholipase C, gamma 2 (phosphatidylinositol-specific)

Calculated MW:

148 kDa

Observed MW:

148 kDa

Purification Method:

Protein A purification

CloneNo.:

2F8H5

Applications

Tested Applications:

WB, IHC, ELISA

Species Specificity:

human

Background Information

Phospholipase C-gamma2 (PLCG2) is a transmembrane signaling enzyme that catalyzes the conversion of 1-phosphatidyl-1D-myo-inositol 4,5-bisphosphate to 1D-myo-inositol 1,4,5-trisphosphate (IP3) and diacylglycerol (DAG) using calcium as a cofactor. IP3 and DAG are second messenger molecules important for transmitting signals from growth factor receptors and immune system receptors across the cell membrane. Mutations in this gene have been found in autoinflammation, antibody deficiency, and immune dysregulation syndrome and familial cold autoinflammatory syndrome 3.

Storage

Storage:

Store at -80°C.

Storage Buffer:

PBS Only

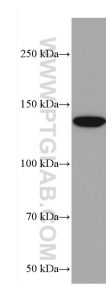
For technical support and original validation data for this product please contact:

T: 1 (888) 4PTGLAB (1-888-478-4522) (toll free in USA), or 1(312) 455-8498 (outside USA)

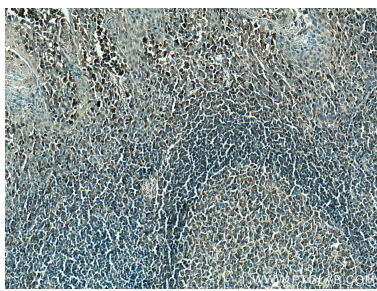
E: proteintech@ptglab.com
W: ptglab.com

This product is exclusively available under Proteintech Group brand and is not available to purchase from any other manufacturer.

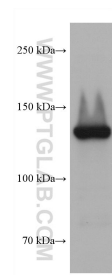
Selected Validation Data



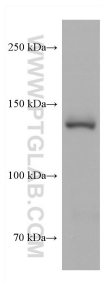
Ramos cells were subjected to SDS PAGE followed by western blot with 67011-1-Ig (PLCG2 antibody) at dilution of 1:2000 incubated at room temperature for 1.5 hours. This data was developed using the same antibody clone with 67011-1-PBS in a different storage buffer formulation.



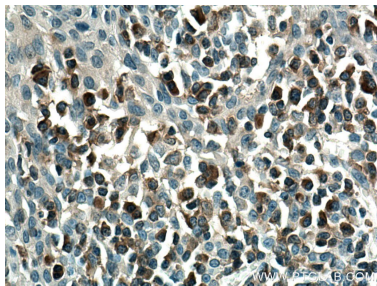
Immunohistochemical analysis of paraffin-embedded human tonsillitis tissue slide using 67011-1-Ig (PLCG2 antibody) at dilution of 1:200 (under 10x lens). Heat mediated antigen retrieval with Tris-EDTA buffer (pH 9.0). This data was developed using the same antibody clone with 67011-1-PBS in a different storage buffer formulation.



Karpas-422 cells were subjected to SDS PAGE followed by western blot with 67011-1-Ig (PLCG2 antibody) at dilution of 1:2000 incubated at room temperature for 1.5 hours. This data was developed using the same antibody clone with 67011-1-PBS in a different storage buffer formulation.



Rabbit spleen tissue was subjected to SDS PAGE followed by western blot with 67011-1-Ig (PLCG2 antibody) at dilution of 1:2000 incubated at room temperature for 1.5 hours. This data was developed using the same antibody clone with 67011-1-PBS in a different storage buffer formulation.



Immunohistochemical analysis of paraffin-embedded human tonsillitis tissue slide using 67011-1-Ig (PLCG2 antibody) at dilution of 1:200 (under 40x lens). Heat mediated antigen retrieval with Tris-EDTA buffer (pH 9.0). This data was developed using the same antibody clone with 67011-1-PBS in a different storage buffer formulation.