

# ICAM4 Monoclonal antibody

Catalog Number: 67014-1-Ig **1 Publications**

## Basic Information

<b>Catalog Number:</b> 67014-1-Ig	<b>GenBank Accession Number:</b> BC029364	<b>Purification Method:</b> Protein G purification
<b>Size:</b> 150ul , Concentration: 2200 ug/ml by Nanodrop and 1000 ug/ml by Bradford method using BSA as the standard;	<b>GeneID (NCBI):</b> 3386	<b>CloneNo.:</b> 3A9B9
<b>Source:</b> Mouse	<b>UNIPROT ID:</b> Q14773	<b>Recommended Dilutions:</b> WB 1:20000-1:100000 IHC 1:2500-1:10000 IF-P 1:200-1:800
<b>Isotype:</b> IgG1	<b>Full Name:</b> intercellular adhesion molecule 4 (Landsteiner-Wiener blood group)	
<b>Immunogen Catalog Number:</b> AG27628	<b>Calculated MW:</b> 271 aa, 29 kDa	
	<b>Observed MW:</b> 42 kDa	

## Applications

<b>Tested Applications:</b> WB, IHC, IF-P, ELISA	<b>Positive Controls:</b>
<b>Cited Applications:</b> WB	<b>WB :</b> human blood tissue, human red blood cells
<b>Species Specificity:</b> human, mouse	<b>IHC :</b> human spleen tissue, human colon tissue, human placenta tissue
<b>Cited Species:</b> human	<b>IF-P :</b> mouse spleen tissue,
<b>Note-IHC: suggested antigen retrieval with TE buffer pH 9.0; (*) Alternatively, antigen retrieval may be performed with citrate buffer pH 6.0</b>	

## Background Information

This gene encodes the Landsteiner-Wiener (LW) blood group antigen(s) that belongs to the immunoglobulin (Ig) superfamily, and that shares similarity with the intercellular adhesion molecule (ICAM) protein family. The protein migrate as a 42 kDa glycoprotein on SDS PAGE. Alternative splicing results in multiple transcript variants encoding distinct isoforms.

## Notable Publications

Author	Pubmed ID	Journal	Application
Nuo Wang	33877318	J Clin Endocrinol Metab	WB

## Storage

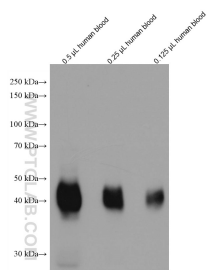
**Storage:**  
Store at -20°C. Stable for one year after shipment.  
**Storage Buffer:**  
PBS with 0.02% sodium azide and 50% glycerol, pH7.3  
Aliquoting is unnecessary for -20°C storage

\*\*\* 20ul sizes contain 0.1% BSA

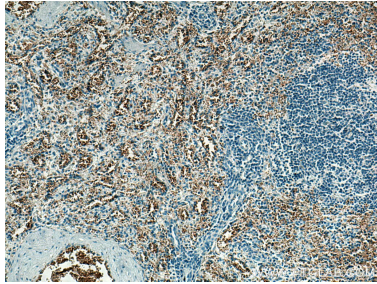
For technical support and original validation data for this product please contact:  
T: 1 (888) 4PTGLAB (1-888-478-4522) (toll free in USA), or 1(312) 455-8498 (outside USA)  
E: [proteintech@ptglab.com](mailto:proteintech@ptglab.com)  
W: [ptglab.com](http://ptglab.com)

This product is exclusively available under Proteintech Group brand and is not available to purchase from any other manufacturer.

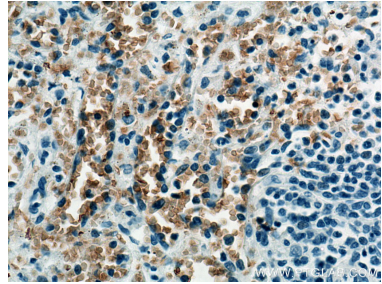
Selected Validation Data



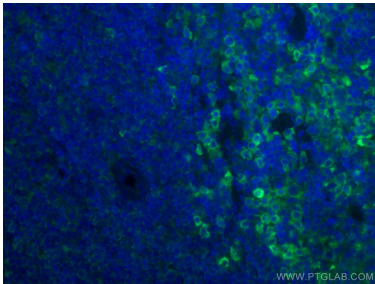
Different amount of human blood lysates were subjected to SDS PAGE followed by western blot with 67014-1-Ig (ICAM4 antibody) at dilution of 1:50000 incubated at room temperature for 1.5 hours.



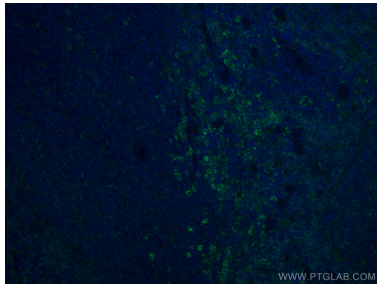
Immunohistochemical analysis of paraffin-embedded human spleen tissue slide using 67014-1-Ig (ICAM4 antibody) at dilution of 1:5000 (under 10x lens). Heat mediated antigen retrieval with Tris-EDTA buffer (pH 9.0).



Immunohistochemical analysis of paraffin-embedded human spleen tissue slide using 67014-1-Ig (ICAM4 antibody) at dilution of 1:5000 (under 40x lens). Heat mediated antigen retrieval with Tris-EDTA buffer (pH 9.0).



Immunofluorescent analysis of (4% PFA) fixed mouse spleen tissue using ICAM4 antibody (67014-1-Ig, Clone: 3A9B9 ) at dilution of 1:400 and CoraLite®488-Conjugated AffiniPure Goat Anti-Mouse IgG(H+L).



Immunofluorescent analysis of (4% PFA) fixed mouse spleen tissue using ICAM4 antibody (67014-1-Ig, Clone: 3A9B9 ) at dilution of 1:400 and CoraLite®488-Conjugated AffiniPure Goat Anti-Mouse IgG(H+L).