

For Research Use Only

# ICAM4 Monoclonal antibody

Catalog Number: 67014-1-Ig **1 Publications**



## Basic Information

<b>Catalog Number:</b> 67014-1-Ig	<b>GenBank Accession Number:</b> BC029364	<b>Purification Method:</b> Protein A purification
<b>Size:</b> 150ul , Concentration: 2200 ug/ml by Nanodrop and 1000 ug/ml by Bradford method using BSA as the standard;	<b>GeneID (NCBI):</b> 3386	<b>CloneNo.:</b> 3A9B9
<b>Source:</b> Mouse	<b>UNIPROT ID:</b> Q14773	<b>Recommended Dilutions:</b> WB 1:20000-1:100000 IHC 1:2500-1:10000 IF-P 1:200-1:800
<b>Isotype:</b> IgG1	<b>Full Name:</b> intercellular adhesion molecule 4 (Landsteiner-Wiener blood group)	
<b>Immunogen Catalog Number:</b> AG27628	<b>Calculated MW:</b> 271 aa, 29 kDa	
	<b>Observed MW:</b> 42 kDa	

## Applications

<b>Tested Applications:</b> WB, IHC, IF-P, ELISA	<b>Positive Controls:</b>
<b>Cited Applications:</b> WB	<b>WB :</b> human blood tissue, human red blood cells
<b>Species Specificity:</b> Human, mouse	<b>IHC :</b> human spleen tissue, human colon tissue, human placenta tissue
<b>Cited Species:</b> human	<b>IF-P :</b> mouse spleen tissue,
<b>Note-IHC: suggested antigen retrieval with TE buffer pH 9.0; (*) Alternatively, antigen retrieval may be performed with citrate buffer pH 6.0</b>	

## Background Information

This gene encodes the Landsteiner-Wiener (LW) blood group antigen(s) that belongs to the immunoglobulin (Ig) superfamily, and that shares similarity with the intercellular adhesion molecule (ICAM) protein family. The protein migrate as a 42 kDa glycoprotein on SDS PAGE. Alternative splicing results in multiple transcript variants encoding distinct isoforms.

## Notable Publications

Author	Pubmed ID	Journal	Application
Nuo Wang	33877318	J Clin Endocrinol Metab	WB

## Storage

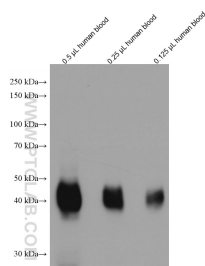
**Storage:**  
Store at -20°C. Stable for one year after shipment.  
**Storage Buffer:**  
PBS with 0.02% sodium azide and 50% glycerol pH 7.3.  
Aliquoting is unnecessary for -20°C storage

\*\*\* 20ul sizes contain 0.1% BSA

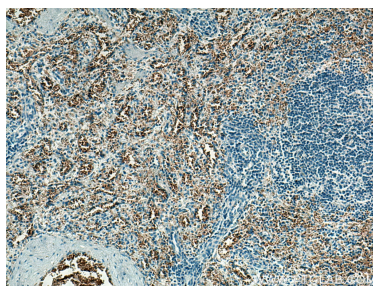
For technical support and original validation data for this product please contact:  
T: 1 (888) 4PTGLAB (1-888-478-4522) (toll free in USA), or 1(312) 455-8498 (outside USA)  
E: proteintech@ptglab.com  
W: ptglab.com

This product is exclusively available under Proteintech Group brand and is not available to purchase from any other manufacturer.

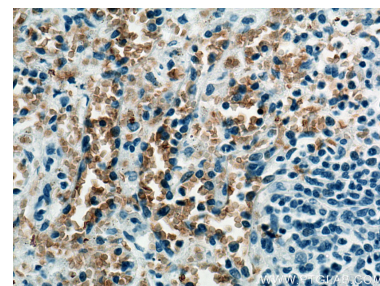
## Selected Validation Data



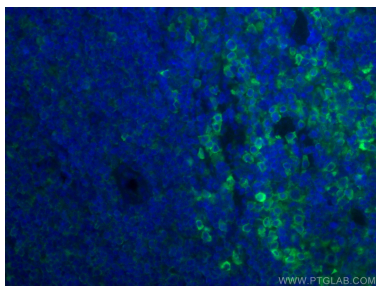
Different amount of human blood lysates were subjected to SDS PAGE followed by western blot with 67014-1-Ig (ICAM4 antibody) at dilution of 1:50000 incubated at room temperature for 1.5 hours.



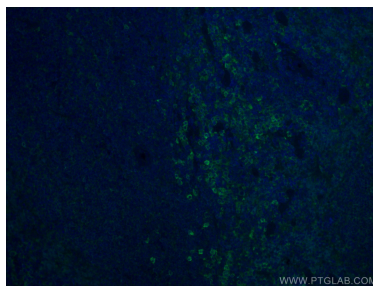
Immunohistochemical analysis of paraffin-embedded human spleen tissue slide using 67014-1-Ig (ICAM4 antibody) at dilution of 1:5000 (under 10x lens). Heat mediated antigen retrieval with Tris-EDTA buffer (pH 9.0).



Immunohistochemical analysis of paraffin-embedded human spleen tissue slide using 67014-1-Ig (ICAM4 antibody) at dilution of 1:5000 (under 40x lens). Heat mediated antigen retrieval with Tris-EDTA buffer (pH 9.0).



Immunofluorescent analysis of (4% PFA) fixed mouse spleen tissue using ICAM4 antibody (67014-1-Ig, Clone: 3A9B9 ) at dilution of 1:400 and CoraLite®488-Conjugated Goat Anti-Mouse IgG(H+L).



Immunofluorescent analysis of (4% PFA) fixed mouse spleen tissue using ICAM4 antibody (67014-1-Ig, Clone: 3A9B9 ) at dilution of 1:400 and CoraLite®488-Conjugated Goat Anti-Mouse IgG(H+L).