

For Research Use Only

LGMN Monoclonal antibody

Catalog Number: 67017-1-Ig **5 Publications**



Basic Information

Catalog Number: 67017-1-Ig	GenBank Accession Number: BC003061	Purification Method: Protein G purification
Size: 150ul, Concentration: 2400 µg/ml by Nanodrop and 1000 µg/ml by Bradford method using BSA as the standard;	GeneID (NCBI): 5641	CloneNo.: 1F2B12
Source: Mouse	Full Name: legumain	Recommended Dilutions: WB 1:5000-1:50000 IHC 1:150-1:600 IF 1:200-1:800
Isotype: IgG1	Calculated MW: 49 kDa	
Immunogen Catalog Number: AG7218	Observed MW: 36 kDa	

Applications

Tested Applications:

IF, IHC, WB, ELISA

Cited Applications:

IHC, WB

Species Specificity:

Human, pig, mouse

Cited Species:

human, mouse

Note-IHC: suggested antigen retrieval with TE buffer pH 9.0; (*) Alternatively, antigen retrieval may be performed with citrate buffer pH 6.0

Positive Controls:

WB : SK-BR-3 cells, HEK-293 cells, NCCIT cells, pig kidney tissue, HeLa cells, MCF-7 cells, LNCaP cells, human placenta tissue, JAR cells, Jurkat cells, ATDC-5 cells

IHC : human kidney tissue, human placenta tissue

IF : human kidney tissue,

Background Information

LGMN (Legumain), also known as asparaginyl endopeptidase or AEP, is a broadly expressed lysosomal cysteine endopeptidase that belongs to peptidase family C13 and specifically hydrolyzes substrate asparaginyl bonds (PMID: 9065484). LGMN directly regulates diverse physiological and pathological processes by remodeling tissue-specific targets (PMID: 25205715, 21292981, 18820679). In addition, LGMN indirectly contributes to atherosclerotic plaque instability through activation of cathepsin L in the arterial ECM (PMID: 19671471, 18377911). LGMN is secreted as inactive prolegumain (56 kDa) and processed into enzymatically active 46 and 36 kDa forms, as well as a 17 kDa enzymatically inactive C-terminal fragment (PMID: 28162997, PMID: 19671471).

Notable Publications

Author	Pubmed ID	Journal	Application
Yue Qiu	33253806	J Control Release	WB
Hongbin Wang	31892854	Int J Biol Sci	WB
Zixue Xuan	36542317	J Mol Neurosci	IHC

Storage

Storage:

Store at -20°C. Stable for one year after shipment.

Storage Buffer:

PBS with 0.02% sodium azide and 50% glycerol pH 7.3.

Aliquoting is unnecessary for -20°C storage

***** 20ul sizes contain 0.1% BSA**

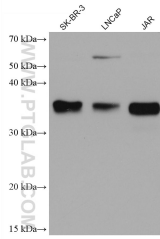
For technical support and original validation data for this product please contact:

T: 1 (888) 4PTGLAB (1-888-478-4522) (toll free in USA), or 1(312) 455-8498 (outside USA)

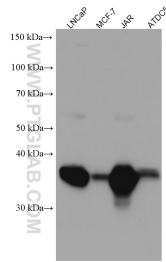
E: proteintech@ptglab.com
W: ptglab.com

This product is exclusively available under Proteintech Group brand and is not available to purchase from any other manufacturer.

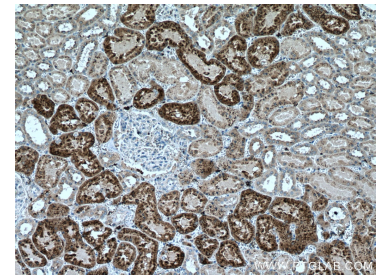
Selected Validation Data



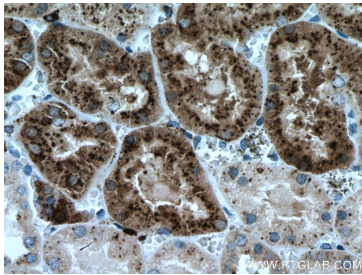
Various lysates were subjected to SDS PAGE followed by western blot with 67017-1-Ig (LGMN antibody) at dilution of 1:20000 incubated at room temperature for 1.5 hours.



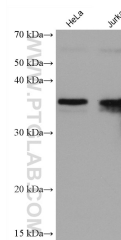
Various lysates were subjected to SDS PAGE followed by western blot with 67017-1-Ig (LGMN antibody) at dilution of 1:5000 incubated at room temperature for 1.5 hours.



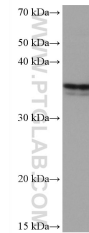
Immunohistochemical analysis of paraffin-embedded human kidney tissue slide using 67017-1-Ig (LGMN antibody) at dilution of 1:300 (under 10x lens). Heat mediated antigen retrieval with Tris-EDTA buffer (pH 9.0).



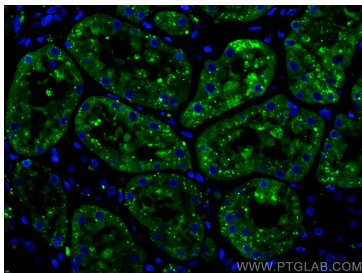
Immunohistochemical analysis of paraffin-embedded human kidney tissue slide using 67017-1-Ig (LGMN antibody) at dilution of 1:300 (under 40x lens). Heat mediated antigen retrieval with Tris-EDTA buffer (pH 9.0).



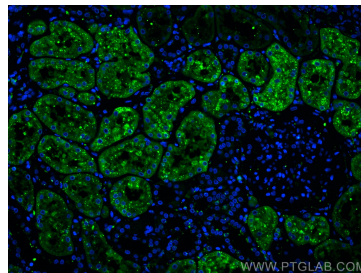
Various lysates were subjected to SDS PAGE followed by western blot with 67017-1-Ig (LGMN antibody) at dilution of 1:20000 incubated at room temperature for 1.5 hours.



MCF-7 cells were subjected to SDS PAGE followed by western blot with 67017-1-Ig (LGMN antibody) at dilution of 1:20000 incubated at room temperature for 1.5 hours.



Immunofluorescent analysis of (4% PFA) fixed human kidney tissue using LGMN antibody (67017-1-Ig, Clone: 1F2B12) at dilution of 1:400 and CoraLite®488-Conjugated AffiniPure Goat Anti-Mouse IgG(H+L).



Immunofluorescent analysis of (4% PFA) fixed human kidney tissue using LGMN antibody (67017-1-Ig, Clone: 1F2B12) at dilution of 1:400 and CoraLite®488-Conjugated AffiniPure Goat Anti-Mouse IgG(H+L).