

For Research Use Only

# LGMN Monoclonal antibody, PBS Only

Catalog Number: 67017-1-PBS

Featured Product



## Basic Information

Catalog Number:

67017-1-PBS

Size:

100ug, Concentration: 1 mg/ml by Nanodrop;

Source:

Mouse

Isotype:

IgG1

Immunogen Catalog Number:

AG7218

GenBank Accession Number:

BC003061

GeneID (NCBI):

5641

UNIPROT ID:

Q99538

Full Name:

legumain

Calculated MW:

49 kDa

Observed MW:

36 kDa

Purification Method:

Protein G purification

CloneNo.:

1F2B12

## Applications

Tested Applications:

WB, IHC, IF-P, Indirect ELISA

Species Specificity:

human, mouse, pig

## Background Information

LGMN (Legumain), also known as asparaginyl endopeptidase or AEP, is a broadly expressed lysosomal cysteine endopeptidase that belongs to peptidase family C13 and specifically hydrolyzes substrate asparaginyl bonds (PMID: 9065484). LGMN directly regulates diverse physiological and pathological processes by remodeling tissue-specific targets (PMID: 25205715, 21292981, 18820679). In addition, LGMN indirectly contributes to atherosclerotic plaque instability through activation of cathepsin L in the arterial ECM (PMID: 19671471, 18377911). LGMN is secreted as inactive prolegumain (56 kDa) and processed into enzymatically active 46 and 36 kDa forms, as well as a 17 kDa enzymatically inactive C-terminal fragment (PMID: 28162997, PMID: 19671471).

## Storage

Storage:

Store at -80°C.

Storage Buffer:

PBS Only

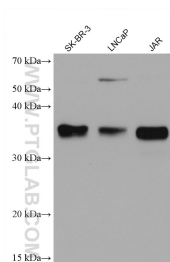
For technical support and original validation data for this product please contact:

T: 1 (888) 4PTGLAB (1-888-478-4522) (toll free in USA), or 1(312) 455-8498 (outside USA)

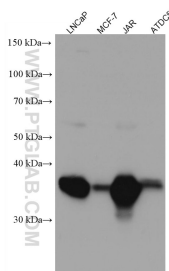
E: [proteintech@ptglab.com](mailto:proteintech@ptglab.com)  
W: [ptglab.com](http://ptglab.com)

This product is exclusively available under Proteintech Group brand and is not available to purchase from any other manufacturer.

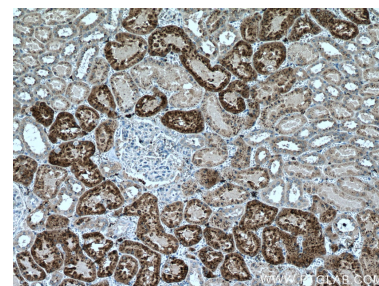
## Selected Validation Data



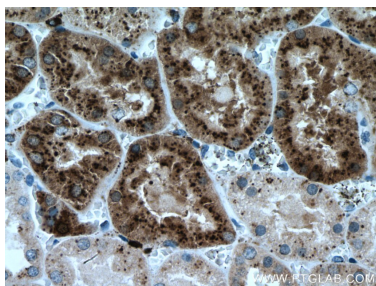
Various lysates were subjected to SDS PAGE followed by western blot with 67017-1-Ig (LGMN antibody) at dilution of 1:20000 incubated at room temperature for 1.5 hours. This data was developed using the same antibody clone with 67017-1-PBS in a different storage buffer formulation.



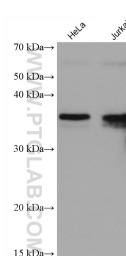
Various lysates were subjected to SDS PAGE followed by western blot with 67017-1-Ig (LGMN antibody) at dilution of 1:5000 incubated at room temperature for 1.5 hours. This data was developed using the same antibody clone with 67017-1-PBS in a different storage buffer formulation.



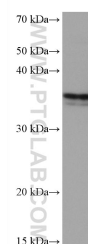
Immunohistochemical analysis of paraffin-embedded human kidney tissue slide using 67017-1-Ig (LGMN antibody) at dilution of 1:300 (under 10x lens). Heat mediated antigen retrieval with Tris-EDTA buffer (pH 9.0). This data was developed using the same antibody clone with 67017-1-PBS in a different storage buffer formulation.



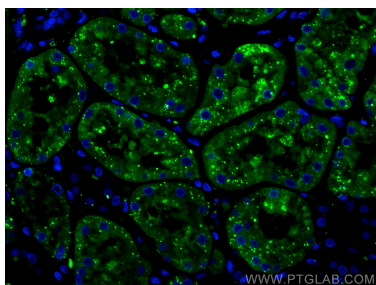
Immunohistochemical analysis of paraffin-embedded human kidney tissue slide using 67017-1-Ig (LGMN antibody) at dilution of 1:300 (under 40x lens). Heat mediated antigen retrieval with Tris-EDTA buffer (pH 9.0). This data was developed using the same antibody clone with 67017-1-PBS in a different storage buffer formulation.



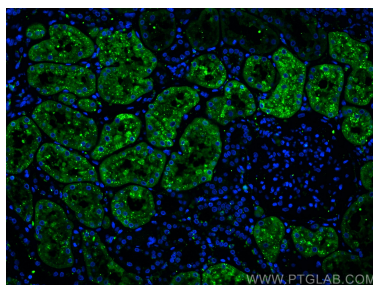
Various lysates were subjected to SDS PAGE followed by western blot with 67017-1-Ig (LGMN antibody) at dilution of 1:20000 incubated at room temperature for 1.5 hours. This data was developed using the same antibody clone with 67017-1-PBS in a different storage buffer formulation.



MCF-7 cells were subjected to SDS PAGE followed by western blot with 67017-1-Ig (LGMN antibody) at dilution of 1:20000 incubated at room temperature for 1.5 hours. This data was developed using the same antibody clone with 67017-1-PBS in a different storage buffer formulation.



Immunofluorescent analysis of (4% PFA) fixed human kidney tissue using LGMN antibody (67017-1-Ig, Clone: 1F2B12) at dilution of 1:400 and CoraLite®488-Conjugated AffiniPure Goat Anti-Mouse IgG(H+L). This data was developed using the same antibody clone with 67017-1-PBS in a different storage buffer formulation.



Immunofluorescent analysis of (4% PFA) fixed human kidney tissue using LGMN antibody (67017-1-Ig, Clone: 1F2B12) at dilution of 1:400 and CoraLite®488-Conjugated AffiniPure Goat Anti-Mouse IgG(H+L). This data was developed using the same antibody clone with 67017-1-PBS in a different storage buffer formulation.