

For Research Use Only

STBD1 Monoclonal antibody

Catalog Number: 67018-1-Ig **2 Publications**



Basic Information

Catalog Number: 67018-1-Ig	GenBank Accession Number: BC022301	Purification Method: Protein A purification
Size: 150ul , Concentration: 1500 ug/ml by Nanodrop and 735 ug/ml by Bradford method using BSA as the standard;	GeneID (NCBI): 8987	CloneNo.: 1A2G2
Source: Mouse	UNIPROT ID: O95210	Recommended Dilutions: WB 1:5000-1:50000 IHC 1:250-1:1000 IF/ICC 1:400-1:1600
Isotype: IgG1	Full Name: starch binding domain 1	
Immunogen Catalog Number: AG28613	Calculated MW: 41 kDa	
	Observed MW: 38 kDa	

Applications

Tested Applications: WB, IHC, IF/ICC, ELISA	Positive Controls:
Cited Applications: WB, IHC, IF, IP	WB : LNCaP cells, HEK-293 cells, A549 cells, HeLa cells, HepG2 cells
Species Specificity: human, mouse	IHC : human liver cancer tissue,
Cited Species: human	IF/ICC : HeLa cells,
Note-IHC: suggested antigen retrieval with TE buffer pH 9.0; (*) Alternatively, antigen retrieval may be performed with citrate buffer pH 6.0	

Background Information

STBD1 may have the capability to bind to carbohydrates. It functions as a glycogen receptor that tethers glycogen to autophagic membranes for delivery and breakdown in lysosomes. STBD1 appears molecular mass of 35-38 kDa band in mouse/rat tissues and 38-43 kDa in human tissue.

Notable Publications

Author	Pubmed ID	Journal	Application
Zhu Han	34059679	Nat Commun	IHC
Nannan Zhou	38099490	J Clin Invest	WB,IF,IP

Storage

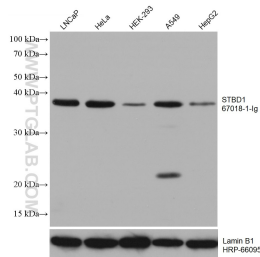
Storage:
Store at -20°C. Stable for one year after shipment.
Storage Buffer:
PBS with 0.02% sodium azide and 50% glycerol pH 7.3.
Aliquoting is unnecessary for -20°C storage

*** 20ul sizes contain 0.1% BSA

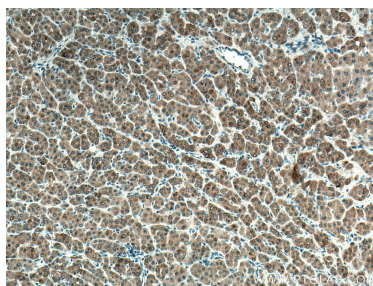
For technical support and original validation data for this product please contact:
T: 1 (888) 4PTGLAB (1-888-478-4522) (toll free in USA), or 1(312) 455-8498 (outside USA)
E: proteintech@ptglab.com
W: ptglab.com

This product is exclusively available under Proteintech Group brand and is not available to purchase from any other manufacturer.

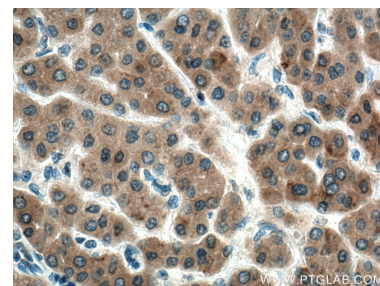
Selected Validation Data



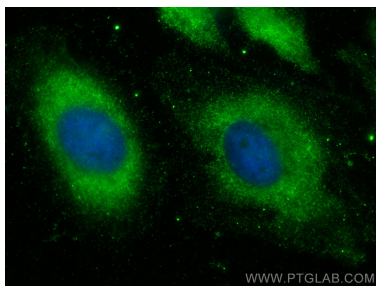
Various lysates were subjected to SDS PAGE followed by western blot with 67018-1-Ig (STBD1 antibody) at dilution of 1:16000 incubated at room temperature for 1.5 hours. The membrane was stripped and reblotted with HRP-conjugated Lamin B1 Monoclonal antibody (HRP-66095) as loading control.



Immunohistochemical analysis of paraffin-embedded human liver cancer tissue slide using 67018-1-Ig (STBD1 antibody) at dilution of 1:500 (under 10x lens). Heat mediated antigen retrieval with Tris-EDTA buffer (pH 9.0).



Immunohistochemical analysis of paraffin-embedded human liver cancer tissue slide using 67018-1-Ig (STBD1 antibody) at dilution of 1:500 (under 40x lens). Heat mediated antigen retrieval with Tris-EDTA buffer (pH 9.0).



Immunofluorescent analysis of (-20°C Ethanol) fixed HeLa cells using STBD1 antibody (67018-1-Ig, Clone: 1A2G2) at dilution of 1:800 and CoraLite®488-Conjugated AffiniPure Goat Anti-Mouse IgG(H+L) (SA00013-1).