

For Research Use Only

# STBD1 Monoclonal antibody

Catalog Number: 67018-1-Ig **2 Publications**



## Basic Information

<b>Catalog Number:</b> 67018-1-Ig	<b>GenBank Accession Number:</b> BC022301	<b>Purification Method:</b> Protein A purification
<b>Size:</b> 150ul , Concentration: 2699 µg/ml by Nanodrop and 1000 µg/ml by Bradford method using BSA as the standard;	<b>GeneID (NCBI):</b> 8987	<b>CloneNo.:</b> 1A2G2
<b>Source:</b> Mouse	<b>Full Name:</b> starch binding domain 1	<b>Recommended Dilutions:</b> WB 1:5000-1:50000 IHC 1:250-1:1000
<b>Isotype:</b> IgG1	<b>Calculated MW:</b> 41 kDa	
<b>Immunogen Catalog Number:</b> AG28613	<b>Observed MW:</b> 38 kDa	

## Applications

<b>Tested Applications:</b> IHC, WB, ELISA	<b>Positive Controls:</b>
<b>Cited Applications:</b> IF, IHC, IP, WB	<b>WB :</b> LNCaP cells, HEK-293 cells, A549 cells, HeLa cells, HepG2 cells
<b>Species Specificity:</b> Human, mouse	<b>IHC :</b> human liver cancer tissue,
<b>Cited Species:</b> human	
<b>Note-IHC: suggested antigen retrieval with TE buffer pH 9.0; (*) Alternatively, antigen retrieval may be performed with citrate buffer pH 6.0</b>	

## Background Information

STBD1 may have the capability to bind to carbohydrates. It functions as a glycogen receptor that tethers glycogen to autophagic membranes for delivery and breakdown in lysosomes. STBD1 appears molecular mass of 35-38 kDa band in mouse/rat tissues and 38-43 kDa in human tissue.

## Notable Publications

Author	Pubmed ID	Journal	Application
Zhu Han	34059679	Nat Commun	IHC
Nannan Zhou	38099490	J Clin Invest	WB,IF,IP

## Storage

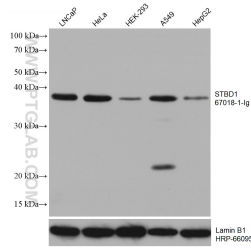
**Storage:**  
Store at -20°C. Stable for one year after shipment.  
**Storage Buffer:**  
PBS with 0.02% sodium azide and 50% glycerol pH 7.3.  
Aliquoting is unnecessary for -20°C storage

\*\*\* 20ul sizes contain 0.1% BSA

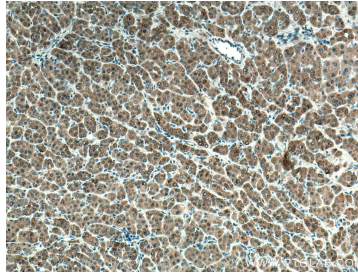
For technical support and original validation data for this product please contact:  
T: 1 (888) 4PTGLAB (1-888-478-4522) (toll free in USA), or 1(312) 455-8498 (outside USA)  
E: proteintech@ptglab.com  
W: ptglab.com

This product is exclusively available under Proteintech Group brand and is not available to purchase from any other manufacturer.

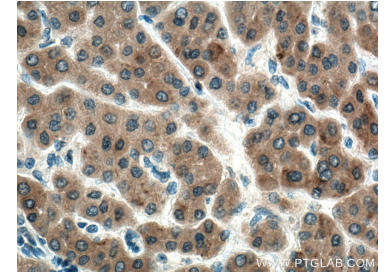
## Selected Validation Data



Various lysates were subjected to SDS PAGE followed by western blot with 67018-1-Ig (STBD1 antibody) at dilution of 1:16000 incubated at room temperature for 1.5 hours. The membrane was stripped and reblotted with HRP-conjugated Lamin B1 Monoclonal antibody (HRP-66095) as loading control.



Immunohistochemical analysis of paraffin-embedded human liver cancer tissue slide using 67018-1-Ig (STBD1 antibody) at dilution of 1:500 (under 10x lens). Heat mediated antigen retrieval with Tris-EDTA buffer (pH 9.0).



Immunohistochemical analysis of paraffin-embedded human liver cancer tissue slide using 67018-1-Ig (STBD1 antibody) at dilution of 1:500 (under 40x lens). Heat mediated antigen retrieval with Tris-EDTA buffer (pH 9.0).