

For Research Use Only

# TAB1 Monoclonal antibody

Catalog Number: 67020-1-Ig **2 Publications**



## Basic Information

<b>Catalog Number:</b> 67020-1-Ig	<b>GenBank Accession Number:</b> BC050554	<b>Purification Method:</b> Protein A purification
<b>Size:</b> 150ul , Concentration: 2000 ug/ml by Nanodrop and 1000 ug/ml by Bradford method using BSA as the standard;	<b>GeneID (NCBI):</b> 10454	<b>CloneNo.:</b> 1E10D12
<b>Source:</b> Mouse	<b>UNIPROT ID:</b> Q15750	<b>Recommended Dilutions:</b> WB 1:5000-1:10000 IHC 1:200-1:800 IF/ICC 1:200-1:800
<b>Isotype:</b> IgG1	<b>Full Name:</b> mitogen-activated protein kinase kinase kinase 7 interacting protein 1	
<b>Immunogen Catalog Number:</b> AG6590	<b>Calculated MW:</b> 55 kDa	
	<b>Observed MW:</b> 55 kDa	

## Applications

<b>Tested Applications:</b> WB, IHC, IF/ICC, ELISA	<b>Positive Controls:</b>
<b>Cited Applications:</b> WB, IP	<b>WB :</b> HEK-293 cells, HeLa cells, HSC-T6 cells, K-562 cells, MCF-7 cells, NIH/3T3 cells
<b>Species Specificity:</b> human, mouse, rat	<b>IHC :</b> human lung cancer tissue,
<b>Cited Species:</b> human	<b>IF/ICC :</b> A431 cells,
<b>Note-IHC: suggested antigen retrieval with TE buffer pH 9.0; (*) Alternatively, antigen retrieval may be performed with citrate buffer pH 6.0</b>	

## Notable Publications

Author	Pubmed ID	Journal	Application
Geeske M van Woerden	35730652	Hum Mutat	WB
Cong Liu	38459169	Leukemia	WB,IP

## Storage

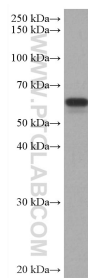
**Storage:**  
Store at -20°C. Stable for one year after shipment.  
**Storage Buffer:**  
PBS with 0.02% sodium azide and 50% glycerol pH 7.3.  
**Aliquoting is unnecessary for -20°C storage**

\*\*\* 20ul sizes contain 0.1% BSA

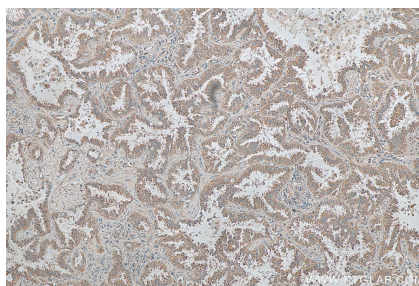
For technical support and original validation data for this product please contact:  
T: 1 (888) 4PTGLAB (1-888-478-4522) (toll free in USA), or 1(312) 455-8498 (outside USA)  
E: proteintech@ptglab.com  
W: ptglab.com

This product is exclusively available under Proteintech Group brand and is not available to purchase from any other manufacturer.

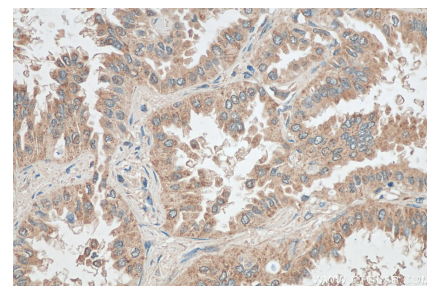
## Selected Validation Data



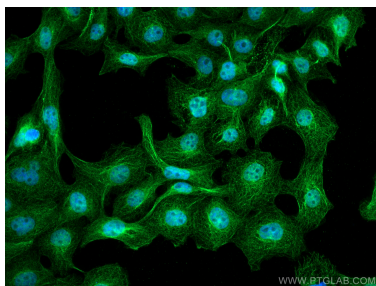
HEK-293 cells were subjected to SDS PAGE followed by western blot with 67020-1-Ig (TAB1 antibody) at dilution of 1:10000 incubated at room temperature for 1.5 hours.



Immunohistochemical analysis of paraffin-embedded human lung cancer tissue slide using 67020-1-Ig (TAB1 antibody) at dilution of 1:400 (under 10x lens). Heat mediated antigen retrieval with Tris-EDTA buffer (pH 9.0).



Immunohistochemical analysis of paraffin-embedded human lung cancer tissue slide using 67020-1-Ig (TAB1 antibody) at dilution of 1:400 (under 40x lens). Heat mediated antigen retrieval with Tris-EDTA buffer (pH 9.0).



Immunofluorescent analysis of (4% PFA) fixed A431 cells using TAB1 antibody (67020-1-Ig, Clone: 1E10D12 ) at dilution of 1:400 and CoraLite®488-Conjugated Goat Anti-Mouse IgG(H+L).