

For Research Use Only

PRC1 Monoclonal antibody

Catalog Number: 67027-1-Ig **Featured Product**



Basic Information

Catalog Number: 67027-1-Ig	GenBank Accession Number: BC003138	Purification Method: Protein A purification
Size: 150ul , Concentration: 2300 ug/ml by Nanodrop and 1000 ug/ml by Bradford method using BSA as the standard;	GeneID (NCBI): 9055	CloneNo.: 1E1D5
Source: Mouse	UNIPROT ID: O43663	Recommended Dilutions: WB 1:2000-1:10000 IHC 1:200-1:1000 IF/ICC 1:400-1:1600
Isotype: IgG1	Full Name: protein regulator of cytokinesis 1	
Immunogen Catalog Number: AG5907	Calculated MW: 72 kDa	
	Observed MW: 66-72 kDa	

Applications

Tested Applications:
WB, IHC, IF/ICC, ELISA

Species Specificity:
Human, mouse, rat

Note-IHC: suggested antigen retrieval with TE buffer pH 9.0; (*) Alternatively, antigen retrieval may be performed with citrate buffer pH 6.0

Positive Controls:

WB : HeLa cells, MCF-7 cells, HEK-293 cells, A549 cells, HepG2 cells, HSC-T6 cells, 4T1 cells

IHC : human breast cancer tissue, human lung cancer tissue

IF/ICC : HeLa cells,

Background Information

PRC1 (protein regulator of cytokinesis 1) is a microtubule-bundling protein that is involved in cytokinesis. Depletion of PRC1 leads to failed cytokinesis. PRC1 is located in the nucleus during interphase, and becomes associated with mitotic spindles in a highly dynamic manner during mitosis, and localizes to the cell mid-body during cytokinesis. PRC1 is a substrate of CDK1 and it was assumed that CDK1 phosphorylation blocks its activity during metaphase. Three isoforms of PRC1 exist due to the alternative splicing, with predictive molecular weight of 71.6 kDa, 70.2 kDa and 66.2 kDa, respectively. The dual bands between 66-72 kDa detected by this antibody may represent different forms of PRC1.

Storage

Storage:
Store at -20°C. Stable for one year after shipment.
Storage Buffer:
PBS with 0.02% sodium azide and 50% glycerol pH 7.3.
Aliquoting is unnecessary for -20°C storage

***** 20ul sizes contain 0.1% BSA**

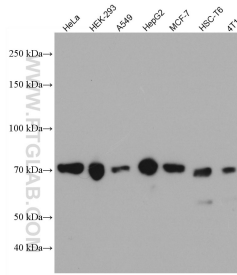
For technical support and original validation data for this product please contact:

T: 1 (888) 4PTGLAB (1-888-478-4522) (toll free in USA), or 1(312) 455-8498 (outside USA)

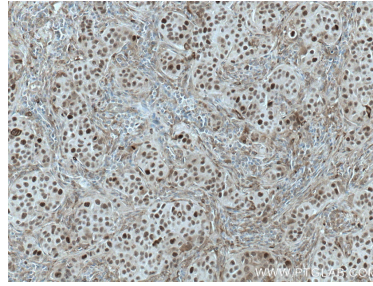
E: proteintech@ptglab.com
W: ptglab.com

This product is exclusively available under Proteintech Group brand and is not available to purchase from any other manufacturer.

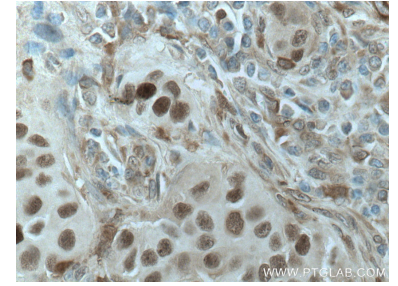
Selected Validation Data



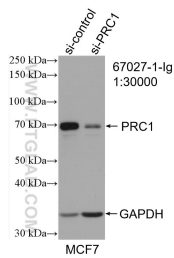
Various lysates were subjected to SDS PAGE followed by western blot with 67027-1-Ig (PRC1 antibody) at dilution of 1:5000 incubated at room temperature for 1.5 hours.



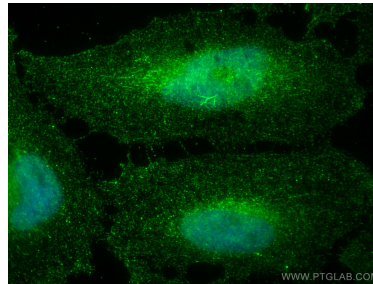
Immunohistochemical analysis of paraffin-embedded human breast cancer tissue slide using 67027-1-Ig (PRC1 antibody) at dilution of 1:500 (under 10x lens. Heat mediated antigen retrieval with Tris-EDTA buffer (pH 9.0).



Immunohistochemical analysis of paraffin-embedded human breast cancer tissue slide using 67027-1-Ig (PRC1 antibody) at dilution of 1:500 (under 40x lens. Heat mediated antigen retrieval with Tris-EDTA buffer (pH 9.0).



WB result of PRC1 antibody (67027-1-Ig; 1:30000; incubated at room temperature for 1.5 hours) with sh-Control and sh-PRC1 transfected MCF-7 cells.



Immunofluorescent analysis of (4% PFA) fixed HeLa cells using PRC1 antibody (67027-1-Ig, Clone: 1E1D5) at dilution of 1:800 and CoraLite®488-Conjugated Goat Anti-Mouse IgG(H+L).