

For Research Use Only

# Ribosomal protein L4 Monoclonal antibody

Catalog Number: 67028-1-Ig **3 Publications**



## Basic Information

<b>Catalog Number:</b> 67028-1-Ig	<b>GenBank Accession Number:</b> BC009888	<b>Purification Method:</b> Protein A purification
<b>Size:</b> 150ul, Concentration: 2500 ug/ml by Nanodrop and 1000 ug/ml by Bradford method using BSA as the standard;	<b>GeneID (NCBI):</b> 6124	<b>CloneNo.:</b> 3C7A8
<b>Source:</b> Mouse	<b>UNIPROT ID:</b> P36578	<b>Recommended Dilutions:</b> WB 1:5000-1:50000 IHC 1:1000-1:4000 IF/ICC 1:200-1:800
<b>Isotype:</b> IgG1	<b>Full Name:</b> ribosomal protein L4	
<b>Immunogen Catalog Number:</b> AG28728	<b>Calculated MW:</b> 48 kDa	
	<b>Observed MW:</b> 48 kDa	

## Applications

<b>Tested Applications:</b> WB, IHC, IF/ICC, FC (Intra), ELISA	<b>Positive Controls:</b> WB : HEK-293 cells, HeLa cells, Jurkat cells, HSC-T6 cells, NIH/3T3 cells, MCF-7 cells, RAW 264.7 cells IHC : human lymphoma tissue, IF/ICC : HepG2 cells,
<b>Cited Applications:</b> WB, IP	
<b>Species Specificity:</b> human, mouse, rat	
<b>Cited Species:</b> human, mouse	
<b>Note-IHC: suggested antigen retrieval with TE buffer pH 9.0; (*) Alternatively, antigen retrieval may be performed with citrate buffer pH 6.0</b>	

## Background Information

60S ribosomal protein L4 is encoded by RPL4 (or RPL1) gene. RPL4 is a component of 60S subunit of ribosome, and belongs to the L4E family. By interacting with c-Myb, RPL4 plays a important role in c-myc expression in response to growth factor and nutritional signals. Recently RPL4 was reported to be able to increase efficiency of viral recoding sequence.

## Notable Publications

Author	Pubmed ID	Journal	Application
Matthias M Zimmer	34893599	Nat Commun	WB,IP
Dingfeng Zou	38657611	Dev Cell	WB
Sneha Shah	32234480	Cell Rep	WB

## Storage

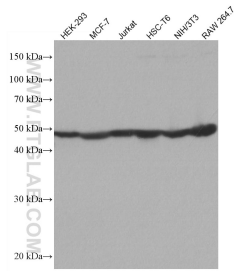
**Storage:**  
Store at -20°C. Stable for one year after shipment.  
**Storage Buffer:**  
PBS with 0.02% sodium azide and 50% glycerol pH 7.3.  
Aliquoting is unnecessary for -20°C storage

\*\*\* 20ul sizes contain 0.1% BSA

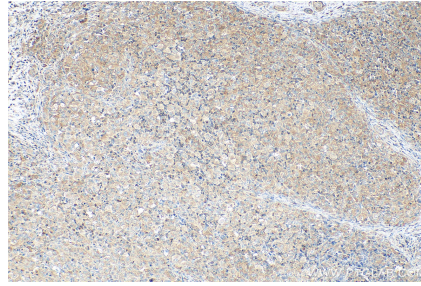
For technical support and original validation data for this product please contact:  
T: 1 (888) 4PTGLAB (1-888-478-4522) (toll free in USA), or 1(312) 455-8498 (outside USA)  
E: proteintech@ptglab.com  
W: ptglab.com

This product is exclusively available under Proteintech Group brand and is not available to purchase from any other manufacturer.

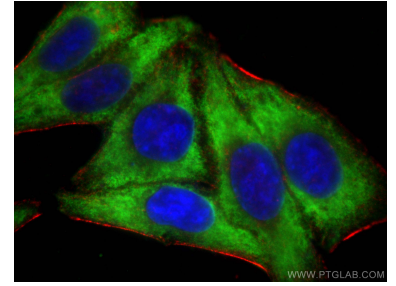
## Selected Validation Data



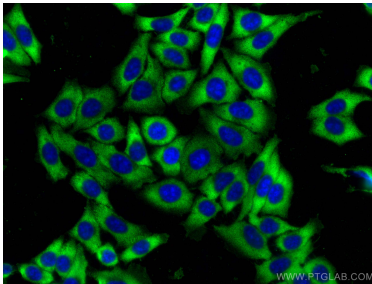
Various lysates were subjected to SDS PAGE followed by western blot with 67028-1-Ig (Ribosomal protein L4 antibody) at dilution of 1:10000 incubated at room temperature for 1.5 hours.



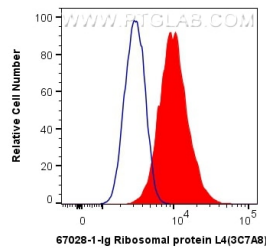
Immunohistochemical analysis of paraffin-embedded human lymphoma tissue slide using 67028-1-Ig (Ribosomal protein L4 antibody) at dilution of 1:2000 (under 10x lens). Heat mediated antigen retrieval with Tris-EDTA buffer (pH 9.0).



Immunofluorescent analysis of (-20°C Ethanol) fixed HepG2 cells using Ribosomal protein L4 antibody (67028-1-Ig, Clone: 3C7A8) at dilution of 1:400 and Multi-rAb CoraLite® Plus 488-Goat Anti-Mouse Recombinant Secondary Antibody (H+L) (RGAM002), CL594-phalloidin (red).



Immunofluorescent analysis of (-20°C Ethanol) fixed HepG2 cells using Ribosomal protein L4 antibody (67028-1-Ig, Clone: 3C7A8) at dilution of 1:400 and CoraLite®488-Conjugated AffiniPure Goat Anti-Mouse IgG(H+L).



$1 \times 10^6$  HepG2 cells were intracellularly stained with 0.4 ug Anti-Human Ribosomal protein L4 (67028-1-Ig, Clone:3C7A8) and CoraLite®488-Conjugated AffiniPure Goat Anti-Mouse IgG(H+L) at dilution 1:1000 (red), or 0.4 ug Mouse IgG1 Isotype Control (MOPC-21) (65124-1-Ig, Clone: MOPC-21) (blue). Cells were fixed with 4% PFA and permeabilized with Flow Cytometry Perm Buffer (PF00011-C).