

NEU1 Monoclonal antibody

Catalog Number: 67032-1-Ig **3 Publications**

Basic Information

Catalog Number: 67032-1-Ig	GenBank Accession Number: BC011900	Purification Method: Protein A purification
Size: 150ul , Concentration: 1000 µg/ml by Nanodrop and 539 µg/ml by Bradford method using BSA as the standard;	GeneID (NCBI): 4758	CloneNo.: 1F6D1
Source: Mouse	Full Name: sialidase 1 (lysosomal sialidase)	Recommended Dilutions: WB 1:1000-1:6000 IHC 1:150-1:600 IF 1:50-1:500
Isotype: IgG1	Calculated MW: 45 kDa	
Immunogen Catalog Number: AG27945	Observed MW: 45-48 kDa	

Applications

Tested Applications: IF, IHC, WB, ELISA	Positive Controls:
Cited Applications: IF, IP, WB	WB : PC-12 cells, rat pancreas tissue, pig liver tissue
Species Specificity: Human, Rat, Pig	IHC : human pancreas cancer tissue,
Cited Species: human, mouse	IF : U-251 cells,
Note-IHC: suggested antigen retrieval with TE buffer pH 9.0; (*) Alternatively, antigen retrieval may be performed with citrate buffer pH 6.0	

Background Information

NEU1 (lysosomal sialidase) encodes a kind of lysosomal enzyme that could cleave terminal sialic acids from glycoproteins or glycolipids to regulate various biological processes by conformational change (PMID:28130415). In the lysosome, NEU1 is one member of a heterotrimeric complex, the others are beta-galactosidase and cathepsin A. The NEU1 is widely expressed in mammalian tissues and involved in lysosomal storage disorder sialidosis, autoimmune diseases and the malignancy and metastasis of cancer cells (PMID:19075514). NEU1 also expresses on the plasma membrane where it modulates several signalling molecules about inflammation, exocytosis, phagocytosis, cell adhesion and proliferation (PMID:21928149). Addition, it is reported that mutation in NEU1 of human could lead to sialidosis (PMID:14517945).

Notable Publications

Author	Pubmed ID	Journal	Application
Rodrigo de Oliveira Formiga	36526272	Br J Pharmacol	IF
Qian-Qian Chen	36973294	Nat Commun	WB,IF,IP
K Jiang	31799657	Eur Rev Med Pharmacol Sci	WB

Storage

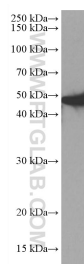
Storage:
Store at -20°C. Stable for one year after shipment.
Storage Buffer:
PBS with 0.02% sodium azide and 50% glycerol pH 7.3.
Aliquoting is unnecessary for -20°C storage

*** 20ul sizes contain 0.1% BSA

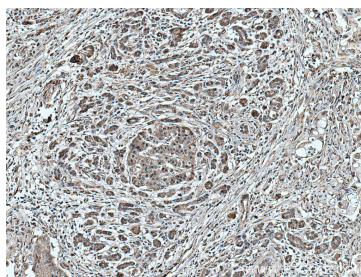
For technical support and original validation data for this product please contact:
T: 1 (888) 4PTGLAB (1-888-478-4522) (toll free in USA), or 1(312) 455-8498 (outside USA)
E: proteintech@ptglab.com
W: ptglab.com

This product is exclusively available under Proteintech Group brand and is not available to purchase from any other manufacturer.

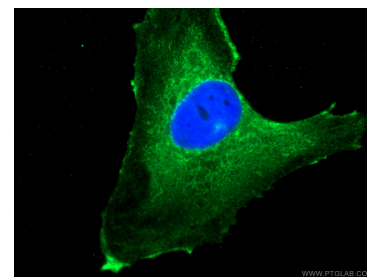
Selected Validation Data



PC-12 cells were subjected to SDS PAGE followed by western blot with 67032-1-Ig (NEU1 antibody) at dilution of 1:3000 incubated at room temperature for 1.5 hours.



Immunohistochemical analysis of paraffin-embedded human pancreas cancer tissue slide using 67032-1-Ig (NEU1 antibody) at dilution of 1:300 (under 10x lens. Heat mediated antigen retrieval with Tris-EDTA buffer (pH 9.0).



Immunofluorescent analysis of (-20°C Ethanol) fixed U-251 cells using 67032-1-Ig (NEU1 antibody), at dilution of 1:200 and CoraLite® 488-Conjugated AffiniPure Goat Anti-Mouse IgG(H+L).