

For Research Use Only

CYP1B1 Monoclonal antibody

Catalog Number: 67033-1-Ig **1 Publications**



Basic Information

Catalog Number: 67033-1-Ig	GenBank Accession Number: BC012049	Purification Method: Protein G purification
Size: 150ul , Concentration: 800 ug/ml by Nanodrop and 500 ug/ml by Bradford method using BSA as the standard;	GeneID (NCBI): 1545	CloneNo.: 1G8D4
Source: Mouse	UNIPROT ID: Q16678	Recommended Dilutions: WB: 1:3000-1:10000 IHC: 1:500-1:2000
Isotype: IgG1	Full Name: cytochrome P450, family 1, subfamily B, polypeptide 1	
Immunogen Catalog Number: AG13380	Calculated MW: 61 kDa	
	Observed MW: 52 kDa	

Applications

Tested Applications: WB, IHC, ELISA	Positive Controls:
Cited Applications: WB	WB : HeLa cells, PC-3 cells, rat brain tissue, mouse brain tissue, pig brain tissue, T-47D cells, MCF-7 cells
Species Specificity: human, mouse, rat, pig	IHC : mouse heart tissue, human rectal cancer tissue, mouse brain tissue
Cited Species: human, mouse	
Note-IHC: suggested antigen retrieval with TE buffer pH 9.0; (*) Alternatively, antigen retrieval may be performed with citrate buffer pH 6.0	

Background Information

Cytochrome P450 CYP1B1 is a recently cloned dioxin-inducible form of the cytochrome P450 family of xenobiotic metabolizing enzymes. CYP1B1 was found to be expressed at a high frequency in a wide range of human cancers of different histogenetic types, including cancers of the breast, colon, lung, esophagus, skin, lymph node, brain, and testis. There was no detectable immunostaining for CYP1B1 in normal tissues.(PMID:9230218). CYP1B1 is a 60 kDa protein that it also can be detected a band of 51 kDa or 57 kDa through the western blot(PMID:9525272; PMID: 9525272).

Notable Publications

Author	Pubmed ID	Journal	Application
Yingying Wei	40153926	Placenta	WB

Storage

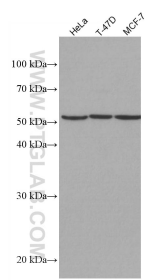
Storage:
Store at -20°C. Stable for one year after shipment.
Storage Buffer:
PBS with 0.02% sodium azide and 50% glycerol, pH7.3
Aliquoting is unnecessary for -20°C storage

*** 20ul sizes contain 0.1% BSA

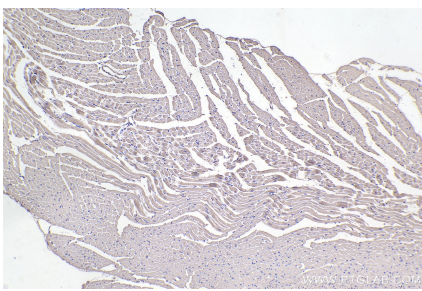
For technical support and original validation data for this product please contact:
T: 1 (888) 4PTGLAB (1-888-478-4522) (toll free in USA), or 1(312) 455-8498 (outside USA)
E: proteintech@ptglab.com
W: ptglab.com

This product is exclusively available under Proteintech Group brand and is not available to purchase from any other manufacturer.

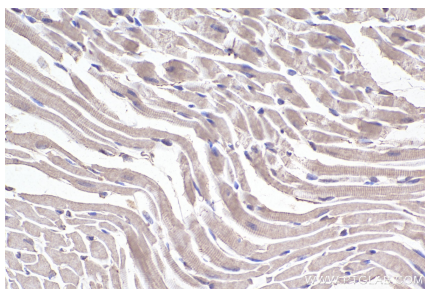
Selected Validation Data



Various lysates were subjected to SDS PAGE followed by western blot with 67033-1-Ig (CYP1B1 antibody) at dilution of 1:6000 incubated at room temperature for 1.5 hours.



Immunohistochemical analysis of paraffin-embedded mouse heart tissue slide using 67033-1-Ig (CYP1B1 antibody) at dilution of 1:1000 (under 10x lens). Heat mediated antigen retrieval with Tris-EDTA buffer (pH 9.0).



Immunohistochemical analysis of paraffin-embedded mouse heart tissue slide using 67033-1-Ig (CYP1B1 antibody) at dilution of 1:1000 (under 40x lens). Heat mediated antigen retrieval with Tris-EDTA buffer (pH 9.0).